

## PRODUCT DATA SHEET

# SikaRoof® Decor Profile PVC

### Decor Profile for PVC Roof System

#### PRODUCT DESCRIPTION

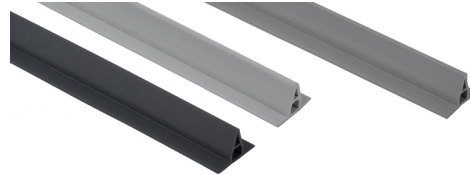
SikaRoof® Decor Profile PVC is a polyvinyl chloride (PVC) extruded profile for welding to PVC sheet waterproofing membranes to replicate standing seam metal roofing systems.

#### USES

SikaRoof® Decor Profile PVC creates an appearance of a standing seam metal roof

#### CHARACTERISTICS / ADVANTAGES

- Applicable for exposed roofing
- Easily applied
- Suitable for any roof slope
- Hot air weldable
- Available in various colours
- Recyclable (Delete if recycling facilities or recycling offerings for roofing membranes are not available in local country)



#### PRODUCT INFORMATION

<b>Chemical Base</b>	Polyvinyl chloride (PVC), profile extruded	
<b>Packaging</b>	Cardboard tube of 25 pieces including connecting plugs.	
<b>Shelf Life</b>	5 years from date of production	
<b>Storage Conditions</b>	The product must be stored in original, unopened and undamaged sealed packaging in dry conditions at temperatures between +5 °C and +30 °C. Always refer to packaging.	
<b>Appearance / Colour</b>	Surface:	smooth
	Colour:	light grey (nearest RAL 7047) lead grey (Sika colour no. 9500) Other colours on request. Subject to minimum order quantities

<b>Length</b>	3000 mm (+10 mm / -5 mm)
<b>Width</b>	35 mm ± 1,3 mm
<b>Height</b>	25 mm ± 1,3 mm
<b>Mass per unit area</b>	~285 g/m

## SYSTEM INFORMATION

<b>System Structure</b>	The following products/tools must be considered for use depending on roof design: <ul style="list-style-type: none"> <li>▪ Sarnamatic® 681/661 Conversion kit Decor Profile</li> <li>▪ Sarnafil® G 410 EL-types</li> <li>▪ Sarnafil® G 410 EL Felt-types</li> <li>▪ Sarnafil® S 327 EL-types</li> <li>▪ Sikaplan® SGK-types</li> <li>▪ Sikaplan® G-types</li> </ul>
<b>Compatibility</b>	Compatible with Sarnafil® PVC and Sikaplan® PVC Roof waterproofing membranes

## APPLICATION INFORMATION

<b>Ambient Air Temperature</b>	-20 °C min. / +60 °C max.
<b>Substrate Temperature</b>	-30 °C min. / +60 °C max.

## VALUE BASE

All technical data stated in this Data Sheet are based on laboratory tests. Actual measured data may vary due to circumstances beyond our control.

## LIMITATIONS

Installation work must only be carried out by Sika® trained and approved contractors, experienced in this type of application.

- Ensure SikaRoof® Decor Profile PVC is prevented from direct contact with incompatible materials (refer to compatibility section).
- The use of SikaRoof® Decor Profile PVC membrane is limited to geographical locations with average monthly minimum temperatures of -50 °C. Permanent ambient temperature during use is limited to +50 °C.
- The use of some ancillary products such as adhesives, cleaners and solvents is limited to temperatures above +5 °C. Observe temperature limitations in the appropriate Product Data Sheets.
- Special measures may be compulsory for installation below +5 °C ambient temperature due to safety requirements in accordance with national regulations.

## ECOLOGY, HEALTH AND SAFETY

Fresh air ventilation must be ensured, when working (welding) in closed rooms.

## REGULATION (EC) NO 1907/2006 - REACH

REGULATION (EC) NO 1907/2006 - REACH: This product is an article as defined in article 3 of regulation (EC) No 1907/2006 (REACH). It contains no substances which are intended to be released from the article under normal or reasonably foreseeable conditions of use. A safety data sheet following article 31 of the same regulation is not needed to bring the product to the market, to transport or to use it. For safe use follow the instructions given in this product data sheet. Based on our current knowledge, this product does not contain SVHC (substances of very high concern) as listed in Annex XIV of the REACH regulation or on the candidate list published by the European Chemicals Agency in concentrations above 0.1 % (w/w).

## APPLICATION INSTRUCTIONS

### SUBSTRATE PREPARATION

The Roof waterproofing membrane must be clean to achieve proper hot air welding

### APPLICATION

Installation procedure  
Ensure the SikaRoof® Decor Profile PVC is tacked into position at the desired centres and hot air weld into place to the roof membrane. Join two or more SikaRoof® Decor Profile PVCs together, using the connector plugs supplied. Finish the end of the profile with a piece of hot air welded membrane if required.

## LOCAL RESTRICTIONS

Note that as a result of specific local regulations the declared data and recommended uses for this product may vary from country to country. Consult the local Product Data Sheet for the exact product data and uses.

## LEGAL NOTES

The information, and, in particular, the recommendations relating to the application and end-use of Sika products, are given in good faith based on Sika's current knowledge and experience of the products when properly stored, handled and applied under normal conditions in accordance with Sika's recommendations. In practice, the differences in materials, substrates and actual site conditions are such that no warranty in respect of merchantability or of fitness for a particular purpose, nor any liability arising out of any legal relationship whatsoever, can be inferred either from this information, or from any written recommendations, or from any other advice offered. The user of the product must test the product's suitability for the intended application and purpose. Sika reserves the right to change the properties of its products. The proprietary rights of third parties must be observed. All orders are accepted subject to our current terms of sale and delivery. Users must always refer to the most recent issue of the local Product Data Sheet for the product concerned, copies of which will be supplied on request.

### SIKA IRELAND LIMITED

Ballymun Industrial Estate  
Ballymun  
Dublin 11, Ireland  
Tel: +353 1 862 0709  
Web: [www.sika.ie](http://www.sika.ie)  
Twitter: @Sikalreland



**Product Data Sheet**  
SikaRoof® Decor Profile PVC  
November 2022, Version 01.01  
020945011150000008

SikaRoofDecorProfilePVC-en-IE-(11-2022)-1-1.pdf

