

SEALING & BONDING CATALOGUE



Introduction

WHO ARE WE?

Sika Limited and Sika Ireland Limited are part of the global Sika Group, specialising in the manufacture and supply of chemical based products. Sika have a leading position in the development and production of systems and products for bonding, sealing, damping, reinforcing, and protecting in the building sector and the motor vehicle industry. Sika has subsidiaries in 100 countries around the world and manufactures in over 200 factories. With more than 18,000 employees Sika generates annual sales of CHF 6.25 billion (£4.76bn). We are also committed to providing quality, service, safety and environmental care.

In the UK and Ireland, we provide market-leading solutions for concrete, waterproofing, roofing, flooring, refurbishment, sealing & bonding, and industry, and have manufacturing sites in Welwyn Garden City, Preston, Leeds and Dublin with more than 865 employees and a turnover of more than £240 million.

QUALITY SEALING & BONDING PRODUCTS

All of the products within this catalogue have been formulated for performance – for all your specification needs, with the re-assurance that you are using a product that has truly been developed for quality above all else.

Both Everbuild and Sika branded products have been used on many large scale projects and developments over the years, and the ranges contain a diverse selection of construction industry products that have wide application possibilities.

All of our products comply to the latest CE Certifications and ISO standards.

TECHNICAL SUPPORT

For all questions, queries or general advice on any of the products within this catalogue please contact our dedicated support line on 0113 200 9456 where our expert team will be able to advise and assist with whatever questions you may have.

With an excellent knowledge of both products and application methods involved our technical support staff are amongst the best in the business.

For larger scale enquiries please contact your specification manager who will arrange a site visit.





[Expansion Joints & Perimeter Seals](#) 4

[Civil Engineering, Floor Joints & Saw Cuts](#) 12

[Cladding, Curtain Walling & Glazing](#) 18

[Fire & Acoustic Protective Seals](#) 25

[Sanitary & Hygienic Sealants](#) 28

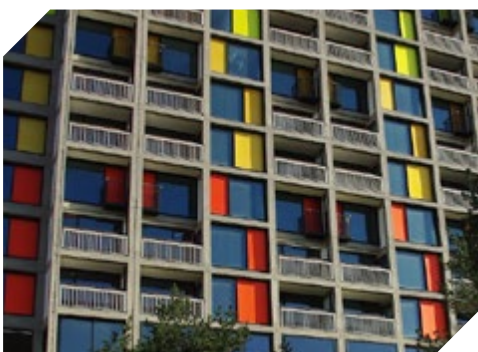
[Swimming Pools](#) 32

[Secure Environments](#) 35

[Primers & Ancillaries](#) 38

[Colour Chart](#) 42

[Sealant Calculator](#) 43



Services We Offer

FOR ALL YOUR SEALING AND BONDING REQUIREMENTS

- Site visits
- Design assistance
- Standard details
- Technical services
- UK based adhesion compatibility testing
- Colour samples

Expansion Joints & Perimeter Seals

We constantly work to develop new products and systems for sealing and bonding façades and windows meeting the latest CE Façade (F) & Glazing (G) requirements. We offer an extensive range of sealant solutions for sealing expansion joints and perimeter seals, in a wide choice of colours, for a wide range of substrates, as well as product performance ideally suited for your particular application.



Silicone 950

SILICONE 950 is a one part, low modulus, neutral cure silicone sealant that adheres to a wide range of both porous and non porous surfaces without the need for priming.

CHARACTERISTICS AND ADVANTAGES

- Excellent tooling properties for large scale construction and glazing applications
- Excellent adhesion—adheres to most common surfaces including glass, metals, plastics and wood (painted or unpainted), uPVC and polycarbonate
- Excellent weathering resistance
- Conforms to ISO 11600 F&G 25 LM, EN 15651-1 F EXT-INT CC F 25 LM and EN 15651-2 G CC 25 LM

PRODUCT INFORMATION

Shore A Hardness (ISO 868)	30-35
Movement Capability (ISO 9047)	±25%
Skinning Time	15-30 mins
Elastic Recovery (ISO 7389)	>80%
Elongation at Break (ISO 8339)	>300%

Product Code	Colour	Pack Size	Box Qty	Boxes/Pallet	Pack Barcode
950NEWWE	White	380ml	25	48	5029347604134
FP950WE	White	600ml	12	75	NO BARCODE



Expansion Joints & Perimeter Seals

Silicone 825

SILICONE 825 is a one part, low modulus, neutral curing Silicone sealant. Used for expansion joints to stone, brick, concrete and composite panels, perimeter pointing around all types of window and door frames. Substrates: Glass, aluminium and PVC - all primerless.

CHARACTERISTICS AND ADVANTAGES

- Excellent tooling and slow skinning properties for large scale construction and glazing applications
- Very good adhesion – adheres to most common surfaces including glass, metals, plastics and wood (painted or unpainted), uPVC and polycarbonate
- Excellent weathering resistance
- Non slump
- Resistant to fumed hydrogen peroxide and fumed formaldehyde
- Conforms to ISO 11600 F&G 25 LM, EN 15651-1 F EXT-INT CC F 25 LM, EN 15651-2 G CC 25 LM, EN 15651-3 S XS2 and SNJF 25 E

PRODUCT INFORMATION

Shore A Hardness (ISO 868)	20-30
Movement Capability	±35% (ASTM 719) +25% (ISO 9047)
Skinning Time	30-45 mins
Elastic Recovery (ISO 7389)	>80%
Elongation at Break (ISO 8339)	>200%

Product Code	Colour	Pack Size	Box Qty	Boxes/Pallet	Pack Barcode
825WE	White	380ml	25	48	5029347603977
825LMWE	Lmst White	380ml	25	48	5029347603977
825ANTH	Anthracite	380ml	25	48	5029347603977
825BG	Beige	380ml	25	48	5029347603977
825BK	Black	380ml	25	48	5029347603977
825BN	Brown	380ml	25	48	5029347603977
825BRICK	Brick Red	380ml	25	48	5029347603977
825BUFF	Buff	380ml	25	48	5029347603977
825DARKGY	Dark Grey	380ml	25	48	5029347603977
825MAG	Magnolia	380ml	25	48	5029347603977
825MIDGREY	Mid Grey	380ml	25	48	5029347603977
825PORT	Port Stone	380ml	25	48	5029347603977
825DKANTH	Dark Anthracite	380ml	25	48	5029347603977



CE

Expansion Joints & Perimeter Seals

Silicone 996

SILICONE 996 is a quick curing low modulus, neutral cure silicone sealant which is suitable for use on glazing and most building and constructions joints, both porous and non porous.

CHARACTERISTICS AND ADVANTAGES

- Excellent tooling properties for large scale construction and glazing applications
- Excellent adhesion—adheres to most common surfaces including glass, metals, plastics and wood (painted or unpainted), uPVC and polycarbonate
- Excellent weathering resistance
- Conforms to EN 15651-1 F EXT-INT CC F 25 LM, EN 15651-2 G CC 25 LM and ISO 11600 F&G 25 LM

PRODUCT INFORMATION

Shore A Hardness (ISO 868)	25-35
Movement Capability (ISO 9047)	±25%
Skinning Time	15-30 mins
Elastic Recovery (ISO 7389)	>70%
Elongation at Break (ISO 8339)	>600%

Product Code	Colour	Pack Size	Box Qty	Boxes/Pallet	Pack Barcode
996BK	Black	380ml	25	48	5029347610272
996TR	Trans	380ml	25	48	5029347610272



CE

Hybriflex 25LM

Hybriflex 25LM is a one part, low modulus building sealant based on hybrid polymer technology.

CHARACTERISTICS AND ADVANTAGES

- High bonding strength
- Interior and exterior use
- Overpaintable
- Solvent Free
- Permanently flexible
- High chemical resistance
- Excellent primerless adhesion to most surfaces, including metals, most plastics, glass, concrete, plaster, plasterboard, polyester, Perspex, glass, wood, enamel, painted surfaces etc.
- Conforms to EN 15651-1 F EXT-INT CC F 25 LM and ISO 11600 F 25 LM

PRODUCT INFORMATION

Shore A Hardness (ISO 868)	20-30
Movement Capability (ISO 9047)	±25%
Skinning Time	20-45 mins
Elastic Recovery (ISO 7389)	>70%
Elongation at Break (ISO 8339)	>400%

Product Code	Colour	Pack Size	Box Qty	Boxes/Pallet	Pack Barcode
HYB25LMWE	White	380ml	25	48	5029347612054



CE

Hybriflex 480

HYBRIFLEX is 480 is a one part, general purpose mid modulus building sealant based on hybrid technology. Ideal for perimeter pointing of UPVC and all window/door frames, expansion joints, weatherproof sealing and trafficked floor joints less than 15mm wide.

CHARACTERISTICS AND ADVANTAGES

- Higher Shore A Hardness value to help prevent damage from vandalism
- Over paintable with common acrylic based paints (less so with alkyds)
- Conforms to EN 15651-1 F EXT-INT CC F 25 HM, EN 15651-4 PW EXT-INT CC 25 HM and ISO 11600 F 25 HM

PRODUCT INFORMATION

Shore A Hardness (ISO 868)	35-45
Movement Capability (ISO 9047)	±25%
Skimming Time	20-35 mins
Elastic Recovery (ISO 7389)	>70%
Elongation at Break (ISO 8339)	>200%

Product Code	Colour	Pack Size	Box Qty	Boxes/Pallet	Pack Barcode
HYB480GY	Grey	380ml	25	48	5029347606107
HYB480WE	White	380ml	25	48	5029347606107



CE

Hybriflex FR

HYBRIFLEX FR is a one part, chemically curing solvent free sealant and adhesive based on hybrid technology. It is specifically designed as a multipurpose floor and wall sealant for all concrete saw cuts and cladding applications and/or slab expansion joints where fire resistance is required.

CHARACTERISTICS AND ADVANTAGES

- Up to 4 hours fire resistance according to EN 1366-4
- Good slump and abrasion resistance
- Excellent chemical resistance
- Good flexibility
- Overpaintable
- Conforms to EN 15651-1 F EXT-INT CC F 20 HM and EN 15651-4 PW EXT-INT CC 12.5E

PRODUCT INFORMATION

Shore A Hardness (ISO 868)	30-40
Movement Capability (ISO 9047)	±20%
Elastic Recovery (ISO 7389)	>70%
Elongation at Break (ISO 8339)	>250%

Product Code	Colour	Pack Size	Box Qty	Boxes/Pallet	Pack Barcode
FPHYBFRGY	Grey	600ml	12	75	No Barcode



CE

Principality Stadium

CASE STUDY



PROJECT LOCATION: Cardiff

MAIN CONTRACTOR: Millennium Stadium PLC

PROJECT BACKGROUND: Stadium is 15 years old and was experiencing water ingress through the concrete terracing, as some of the expansion joints had failed from the original application. The project is based over a year and a half approximately, and is to cut out and reseal all expansion joints and other required areas on all three stadium tiers. This is to be split over different phases to accommodate the stadium being used for events – Rugby League World Cup and Rugby Union Six Nations etc.

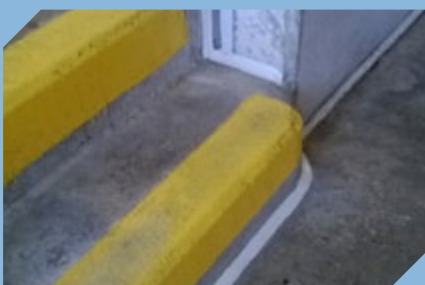
Application: Project was to cut out and reseal approximately 40,000m of all sealant joints, including treads and risers, vomitory and step areas as well as the main vertical and horizontal terrace expansion joints up to 35mm.

PROJECT START DATE: October 2013

PROJECT COMPLETION DATE: Autumn 2016

PRODUCTS USED:

- Hybriflex FR
- Joint Backer Rod
- Sealant Primer P1



Expansion Joints & Perimeter Seals

SikaHyflex®-250 Façade

SikaHyflex®-250 Façade is a one part, moisture curing, and low modulus elastic joint sealant suitable for movement and connection joints in commercial building envelopes.

CHARACTERISTICS AND ADVANTAGES

- Very good weathering resistance
- Bubble-free curing
- Low stress to the substrate
- Easy to smooth and very good workability
- Very good adhesion to many substrates
- Solvent free and odourless
- Very low emissions
- Conforms to EN 15651-1 F EXT-INT CC 25 LM, ISO 11600 F 25 LM, DIN 18540 F and ASTM C920, class 100/50. EMICODE EC 1+R, very low emission. ISO 16938-1 non staining on natural stone (tested on marble). LEED Attestation

PRODUCT INFORMATION

Shore A Hardness (ISO 868)	~20
Movement Capability	+25% (ISO 9047) +100%/-50% (ASTM C719)
Curing Rate	~3 mm/24 h
Elastic Recovery (ISO 7389)	~80%
Elongation at Break (ISO 37)	~800%

Product Code	Colour	Pack Size	Box Qty	Boxes/Pallet	Pack Barcode
FPSKHY250FCBGY	Basalt Grey	600ml	20	48	7612894991093
FPSKHY250FCCGY	Conc. Grey	600ml	20	48	7612894945478
FPSKHY250FCDBGY	Dark. Grey	600ml	20	48	7612894946819
FPSKHY250FCIV	Cream Ivory	600ml	20	48	7612894991079
FPSKHY250FCWE	White	600ml	20	48	7612894949094
FPSKHY250FCPT	Portland Stone	600ml	20	48	7612894946918

SikaBond® AT Universal

SikaBond® AT Universal is a one part, solvent-free, elastic adhesive with a very good adhesion on non-porous and porous substrates. Designed for interior and exterior applications.

CHARACTERISTICS AND ADVANTAGES

- High adhesive strength without priming
- Excellent workability
- Short cut off string
- Good initial tack and fast curing
- Compensation of substrate unevenness
- Non-corrosive
- Good weathering and water resistance
- Overpaintable
- Silicone free
- Conforms to ISO 11600 F 20 HM. ISEGA Certificate for foodstuff area usage

PRODUCT INFORMATION

Shore A Hardness (ISO 868)	~33
Movement Capability (ISO 9047)	±20%
Skinning Time	~35 mins
Elastic Recovery (ISO 7389)	~70%
Elongation at Break (ISO 37)	~400%

Product Code	Colour	Pack Size	Box Qty	Boxes/Pallet	Pack Barcode
SKBDATUGY	Grey	300ml	12	112	7612894458541
FPSKBDATUGY	Grey	600ml	20	48	7612894454291



* Other colours available, please contact Technical Services



Expansion Joints & Perimeter Seals

Sikaflex® Construction +

Sikaflex® Construction+ is a one part, moisture curing, elastic joint sealant. Suitable for movement and connection joints in concrete façades.

CHARACTERISTICS AND ADVANTAGES

- Very good weathering resistance
- Bubble-free curing
- Easy to smooth and very good workability
- Good adhesion to many substrates
- Solvent free
- Suitable for use in hot and tropical climatic conditions
- Innovative surface: slightly structured when dry tooled, smooth when wet tooled
- Conforms to EN 15651-1 F EXT-INT CC 25 HM, ISO 11600 F 25 HM, EMICODE EC1+R, Very low emission. LEED Attestation

PRODUCT INFORMATION

Shore A Hardness (ISO 868)	~28
Movement Capability	±35 (ASTM C719) ±25% (ISO 9047)
Skinning Time	~65 mins
Elastic Recovery (ISO 7389)	>90%
Elongation at Break (ISO 37)	~800%

Product Code	Colour	Pack Size	Box Qty	Boxes/Pallet	Pack Barcode
FPSKFLEXCONCGY	Grey	600ml	20	48	7612894961690



Sikaflex®-11 FC+

Sikaflex®-11 FC+ is a one part, moisture curing, elastic joint sealants and multi purpose i-Cure technology polyurethane adhesive and sealant. Suitable for indoor and outdoor applications.

CHARACTERISTICS AND ADVANTAGES

- Very good adhesion to most construction materials
- Good mechanical and weathering resistance
- Impact and vibration absorbing
- Solvent free
- Conforms to EN 15651-1 F EXT-INT CC, EN 15651-4 PW EXT-INT CC, EMICODE EC1+R, Very low emission

As a sealant:

- For vertical and horizontal joints
- Soundproofing of pipes
- Caulking between partitions
- Seam sealing

As a multipurpose adhesive:

- For indoor and outdoor bonding

PRODUCT INFORMATION

Shore A Hardness (ISO 868)	~37
Skinning Time	~70 minutes
Elastic Recovery (ISO 7389)	>75%
Elongation at Break (ISO 37)	~700%

Product Code	Colour	Pack Size	Box Qty	Boxes/Pallet	Pack Barcode
SKFLEX11FCBK	Black	300ml	12	112	7612894010824
SKFLEX11FCBN	Brown	300ml	12	112	7612894011012
SKFLEX11FCGY	Grey	300ml	12	112	7612894010664
SKFLEX11FCWE	White	300ml	12	112	7612894010404
FPSKFLEX11FCCGY	Black	600ml	20	48	7612894010763
FPSKFLEX11FCCGY	Grey	600ml	20	48	7612894010534



Bodleian Book Storage

CASE STUDY



PROJECT LOCATION: Swindon

MAIN CONTRACTOR: Mace Plus
Pre cast concrete company : Decomo

PROJECT BACKGROUND: A brand new book storage facility to house the lower usage items from the Bodleian Library at Oxford University. The BSF will store 8.4 million books on 153 miles of shelving, with a shelf surface area equivalent to 16.5 football pitches. The £26 million facility will store collections of books, maps, manuscripts, microfilms, periodicals and newspapers from the 18th Century onwards.

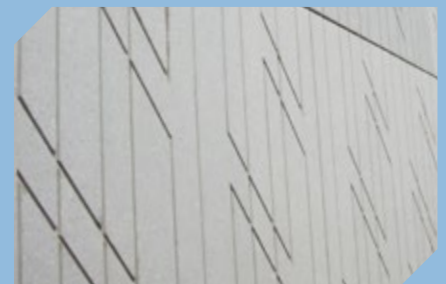
APPLICATION: Product Fireseal 400 used to create a Fireseal in Precast panel joint averaging 30mm in width and 15mm deep. Tests were carried out on panels that were supplied to us from Decomo.

PROJECT START DATE: January 2010

PROJECT COMPLETION DATE: October 2010

PRODUCTS USED:

- Fire Sealant 400 Silicone
- Joint Backer Rod
- Sealant Primer P1



Civil Engineering, Floor Joints & Saw Cuts

We offer the best of both Sika i-Cure polyurethanes and Everbuild Tecnic hybrid polymer technologies meeting the latest CE Pedestrian Walkway (PW EXT-INT CC) requirements. This wide range includes floor and wall grades of sealants, offering good mechanical and chemical resistance for an extensive range of applications.



Puraflex 40

PURAFLEX 40 is a high modulus, one component, polyurethane based sealant and adhesive that remains permanently elastic and has good adhesion to most substrates.

CHARACTERISTICS AND ADVANTAGES

- Good chemical and weathering resistance
- Bonds to concrete, wood, metal, aluminium, polyester, glass, uPVC, stone, ceramics, etc.
- Overpaintable
- Solvent free
- Conforms to: EN 15651-1 F EXT-INT CC 25 HM and EN 5651-4 PW EXT-INT CC 25 HM, LEED Attestation. EMICODE EC1+R

CE

PRODUCT INFORMATION

Shore A Hardness (ISO 868)	~37
Movement Capability (ISO 9047)	±25%
Skinning Time	~70 mins
Elastic Recovery (ISO 7389)	~75%
Elongation at Break (ISO ?)	



Product Code	Colour	Pack Size	Box Qty	Boxes/Pallet	Pack Barcode
INDPU40BK	Black	C3	12	112	5029347613143
INDPU40GY	Grey	C3	12	112	5029347613150
INDPU40WE	White	C3	12	112	5029347613167
FPINDPU40BK6	Black	600ml	20	48	NO BARCODE
FPINDPU40GY6	Grey	600ml	20	48	NO BARCODE

Civil Engineering, Floor Joints & Saw Cuts

Hybriflex 480

HYBRIFLEX is 480 is a one part, general purpose mid modulus building sealant based on hybrid technology. Ideal for perimeter pointing of UPVC and all window/door frames, expansion joints, weatherproof sealing and trafficked floor joints less than 15mm wide.

CHARACTERISTICS AND ADVANTAGES

- Higher Shore A Hardness value to help prevent damage from vandalism
- Over paintable with common acrylic based paints (less so with alkyds)
- Conforms to EN 15651-1 F EXT-INT CC F 25 HM, EN 15651-4 PW EXT-INT CC 25 HM and ISO 11600 F 25 HM

PRODUCT INFORMATION

Shore A Hardness (ISO 868)	35-45
Movement Capability (ISO 9047)	±25%
Skimming Time	20-35 mins
Elastic Recovery (ISO 7389)	>70%
Elongation at Break (ISO 8339)	>200%

Product Code	Colour	Pack Size	Box Qty	Boxes/Pallet	Pack Barcode
HYB480GY	Grey	380ml	25	48	5029347606107
HYB480WE	White	380ml	25	48	5029347606107



RAF Lyneham

CASE STUDY



PROJECT LOCATION: Lyneham, Wiltshire

MAIN CONTRACTOR: Kier Group & Balfour Beatty

PROJECT BACKGROUND: Project Hercules is a new build construction of a specialist defence training college. It is a 50:50 joint venture between Kier Group and Balfour Beatty.

The development is to transform the former RAF airbase into a new Armed Forces Training Facility for the Defence Infrastructure Organisation (D.I.O.). Buildings consist of new single living accommodation for military trainees and purpose built enhanced training facilities for over 1,100 trainees and 800 staff.

This is a combined services training facility – Army, Royal Navy and Royal Air Force.

APPLICATION: Requirement was to seal:

Externally: Vertical expansion joints in the external brick walls up to 25mm wide, around window and door frames to brickwork reveal. Horizontal concrete floor slab joints surrounding the maintenance hangers up to 30mm wide that will be subject to trafficking. Concrete floor slab joints in training culverts, subject to trafficking.

Internally: Horizontal saw cut floor joints that would be subject to trafficking as well as sealing perimeter floor to wall joints. Vertical expansion joints between steel column and internal block work wall.

PROJECT START DATE: February 2014

PROJECT COMPLETION DATE: September 2015

PRODUCTS USED:

- Sika Primer 3N
- Sikaflex® Pro3
- Silicone 825

Hybriflex FR

HYBRIFLEX FR is a one part, chemically curing solvent free sealant and adhesive based on hybrid technology. It is specifically designed as a multipurpose floor and wall sealant for all concrete saw cuts and cladding applications and/or slab expansion joints where fire resistance is required.

CHARACTERISTICS AND ADVANTAGES

- Up to 4 hours fire resistance according to EN 1366-4
- Good slump and abrasion resistance
- Excellent chemical resistance
- Good flexibility
- Overpaintable
- Conforms to EN 15651-1 F EXT-INT CC F 20 HM and EN 15651-4 PW EXT-INT CC 12.5E

PRODUCT INFORMATION

Shore A Hardness (ISO 868)	30-40
Movement Capability (ISO 9047)	±20%
Elastic Recovery (ISO 7389)	>70%
Elongation at Break (ISO 8339)	>250%

Product Code	Colour	Pack Size	Box Qty	Boxes/Pallet	Pack Barcode
FPHYBFRGY	Grey	600ml	12	75	No Barcode



Hybriflex SMP

HYBRIFLEX SMP is a high modulus one part, chemically curing solvent free sealant and adhesive combining the best qualities of silicone and polyurethane technologies. It is specifically designed as a multi purpose floor and wall grade for all concrete saw cuts and cladding applications and/or slab expansion joints, where abrasion resistance is required.

CHARACTERISTICS AND ADVANTAGES

- Excellent trafficking and abrasion resistance
- Non slump
- Overpaintable
- Conforms to ISO 11600 F 25 HM, EN 15651-1 F EXT-INT CC F 25 HM and EN 15651-4 PW EXT-INT CC 25 HM

PRODUCT INFORMATION

Shore A Hardness (ISO 868)	~40
Movement Capability (ISO 9047)	±25%
Skimming Time	20-55 mins
Elastic Recovery (ISO 7389)	~70%
Elongation at Break (ISO 8339)	>200%

*Depending on humidity levels and substrate moisture content.

Product Code	Colour	Pack Size	Box Qty	Boxes/Pallet	Pack Barcode
FPHYBSMPGY	Grey	600ml	12	75	NO BARCODE



Sikaflex® PRO-3

Sikaflex® PRO-3 is a one part, moisture curing, elastic joint sealant based on i-Cure Technology Polyurethane for movement and connection joints in floors in pedestrian and traffic areas, warehouse and production areas, applications in the food industry, sewage treatment plants, tunnel construction and in cleanrooms.

CHARACTERISTICS AND ADVANTAGES

- Bubble-free curing
- Very good mechanical and chemical resistance
- Very good adhesion to most construction materials
- Conforms to EN 15651-4 PW EXT-INT CC 25 HM, ISO 11600 F 25 HM and ASTM C 920, Class 35. Tested according principals of DIBT for Waste Water Exposure and against diesel and jet fuel. EMI CODE EC1 PLUS R, very low emission. Approved according to ISEGA for foodstuff area and for cleanroom (CSM Biological Resistance and CSM TVOC) and Drinking Water Contact (BS 6920)

PRODUCT INFORMATION

Shore A Hardness (ISO 868)	~37
Movement Capability (ISO 9047)	±25%
Elastic Recovery (ISO 7389)	>90%
Elongation at Break	>600%
Tear Propagation Resistance (ISO 34)	~8 N/mm

Product Code	Colour	Pack Size	Box Qty	Boxes/Pallet	Pack Barcode
FPSKPR03GY6	Grey	600ml	20	48	7612894878349
FPSKPR03BK6	Black	600ml	20	48	7612894878387
FPSKPR03WE6	White	600ml	20	48	7612894878400

Sikaflex® PRO-3 SL

Sikaflex® PRO-3 SL is a moisture curing, self-levelling, one part elastic sealant based on i-Cure technology polyurethane for indoor and outdoor applications. Ideal as a self-levelling floor joint sealant suitable for movement and connection joints in floors for pedestrian and traffic areas, in warehouse and production areas, surfaces in the food industry, in ceramic tiles

CHARACTERISTICS AND ADVANTAGES

- Self-levelling
- Bubble free curing
- Solvent free
- Good adhesion to most substrates
- Very good mechanical and chemical resistance
- Conforms to EN 15651-4 PW EXT-INT CC 25 HM and ISO 116010 25 HM. Isega Certificate for foodstuff area usage and approved to drinking water contact (BS 6920). Resistance against waste water, diesel and jet fuel according to DIBT guidelines. LEED Attestation. EMI CODE EC1+R

PRODUCT INFORMATION

Shore A Hardness (ISO 868)	~28
Movement Capability (ISO 9047)	±25%
Elastic Recovery (ISO 7389)	>90%
Elongation at Break	>700%
Tear Propagation Resistance (ISO 34)	~8 N/mm

Product Code	Colour	Pack Size	Box Qty	Boxes/Pallet	Pack Barcode
FPSKFLEXP35LGY	Con. Grey	600ml	20	48	7612894826821
FPSKFLEXP35LBK	Black	600ml	20	47	7612894826395



Sikaflex® Floor

Sikaflex® Floor is a one part, moisture curing, elastic joint sealant connection joints in floors, joints for crack control in industrial floors and floor joints between pre-cast concrete elements (mainly indoor)

CHARACTERISTICS AND ADVANTAGES

- Bubble-free curing
- Good application properties
- Very good adhesion to most construction materials
- Solvent free and odourless
- Good chemical resistance
- Conforms to EN 15651-4 PW EXT-INT CC 12.5 E, ISO 11600 F 12.5 E and ASTM C 920 Class 25

PRODUCT INFORMATION

Shore A Hardness (ISO 868)	~40
Movement Capability (ISO 9047)	±12.5%
Skimming Time	~60 mins
Elastic Recovery (ISO 7389)	~70%
Elongation at Break (ISO 37)	~500%
Tear Propagation Resistance (ISO 34)	~7 N/mm

Product Code	Colour	Pack Size	Box Qty	Boxes/Pallet	Pack Barcode
FPSKFLEXFL6	Grey	600ml	20	48	7612894830590



Sikaflex® Tank N

Sikaflex® Tank N is a one part, moisture curing, elastic joint sealant which is used in areas for the storage, filling and handling of water polluting liquids such as floor joints in petrol stations, joints in handling areas, storage tanks and containment bonds, movement and connection joints in parking garages..

CHARACTERISTICS AND ADVANTAGES

- High chemical and mechanical resistance
- Excellent application properties
- Conforms to European Technical Approval ETA-09/0272

PRODUCT INFORMATION

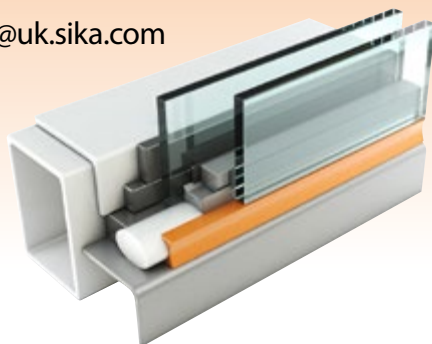
Shore A Hardness (ISO 868)	~35
Movement Capability (ISO 9047)	±25%
Curing Rate	~2.5 mm/24 h
Skin Time	~90 mins
Elastic Recovery (ISO 7389)	~80%
Elongation at Break (ISO 8339)	~700%

Product Code	Colour	Pack Size	Box Qty	Boxes/Pallet	Pack Barcode
FPSKFLEXTKGY6	Grey	600ml	20	48	7612894633962



Cladding, Curtain Walling & Glazing

The building envelope design is a central part of the building's planning process as the façade not only provides the first visual impression of the building but also impacts the climate control of the building. There is also a full range of sealants and colours suitable for movement and connection joints in commercial building envelopes. For information on Structural Glazing please contact Sika on 01707 363893 or industry.technical@uk.sika.com



Silicone 996

SILICONE 996 is a quick curing low modulus, neutral cure silicone sealant which is suitable for use on glazing and most building and constructions joints, both porous and non porous.

CHARACTERISTICS AND ADVANTAGES

- Excellent tooling properties for large scale construction and glazing applications
- Excellent adhesion—adheres to most common surfaces including glass, metals, plastics and wood (painted or unpainted), uPVC and polycarbonate
- Excellent weathering resistance
- Conforms to EN 15651-1 F EXT-INT CC F 25 LM, EN 15651-2 G CC 25 LM and ISO 11600 F&G 25 LM

PRODUCT INFORMATION

Shore A Hardness (ISO 868)	25-35
Movement Capability (ISO 9047)	±25%
Skinning Time	15-30 mins
Elastic Recovery (ISO 7389)	>70%
Elongation at Break (ISO 8339)	>600%

Product Code	Colour	Pack Size	Box Qty	Boxes/Pallet	Pack Barcode
996BK	Black	380ml	25	48	5029347610272
996TR	Trans	380ml	25	48	5029347610272



Cladding, Curtain Walling & Glazing

Silicone 825

SILICONE 825 is a one part, low modulus, neutral curing Silicone sealant. Used for expansion joints to stone, brick, concrete and composite panels, perimeter pointing around all types of window and door frames. Substrates: Glass, aluminium and PVC - all primerless.

CHARACTERISTICS AND ADVANTAGES

- Excellent tooling and slow skinning properties for large scale construction and glazing applications
- Very good adhesion - adheres to most common surfaces including glass, metals, plastics and wood (painted or unpainted), uPVC and polycarbonate
- Excellent weathering resistance
- Non slump
- Resistant to fumed hydrogen peroxide and fumed formaldehyde
- Conforms to ISO 11600 F&G 25 LM, EN 15651-1 F EXT-INT CC F 25 LM, EN 15651-2 G CC 25 LM, EN 15651-3 S XS2 and SNJF 25 E



PRODUCT INFORMATION

Shore A Hardness (ISO 868)	20-30
Movement Capability	±35% (ASTM 719)
	±25% (ISO9047)
Skimming Time	30-45 mins
Elastic Recovery (ISO 7389)	>80%
Elongation at Break (ISO 8339)	>200%



Product Code	Colour	Pack Size	Box Qty	Boxes/Pallet	Pack Barcode
825WE	White	380ml	25	48	5029347603977
825LMWE	Lmst White	380ml	25	48	5029347603977
825ANTH	Anthracite	380ml	25	48	5029347603977
825BG	Beige	380ml	25	48	5029347603977
825BK	Black	380ml	25	48	5029347603977
825BN	Brown	380ml	25	48	5029347603977
825BRICK	Brick Red	380ml	25	48	5029347603977
825BUFF	Buff	380ml	25	48	5029347603977
825DARKGY	Dark Grey	380ml	25	48	5029347603977
825MAG	Magnolia	380ml	25	48	5029347603977
825MIDGREY	Mid Grey	380ml	25	48	5029347603977
825PORT	Port Stone	380ml	25	48	5029347603977
825DKANTH	Dark Anthracite	380ml	25	48	5029347603977

To view all our products latest PDS, SDS, D.O.P. information and further product case studies, visit our easy to use specialist website.



www.everbuild-tecnic.co.uk

Cladding, Curtain Walling & Glazing

SikaBond® AT Universal

SikaBond® AT Universal is a one part, solvent-free, elastic adhesive with a very good adhesion on non-porous and porous substrates. Designed for interior and exterior applications.

CHARACTERISTICS AND ADVANTAGES

- High adhesive strength without priming
- Excellent workability
- Short cut off string
- Good initial tack and fast curing
- Compensation of substrate unevenness
- Non-corrosive
- Good weathering and water resistance
- Overpaintable
- Silicone free
- Conforms to ISO 11600 F 20 HM. ISEGA Certificate for foodstuff area usage

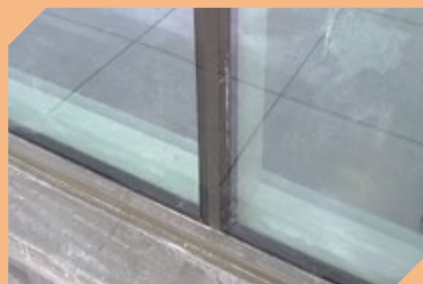
PRODUCT INFORMATION

Shore A Hardness (ISO 868)	~33
Movement Capability (ISO 9047)	±20%
Skimming Time	~35 mins
Elastic Recovery (ISO 7389)	~70%
Elongation at Break (ISO 37)	~400%



Standard Life Investments Building

CASE STUDY



PROJECT LOCATION: St. James House, London

MAIN CONTRACTOR: I.S.G.

PROJECT BACKGROUND: The new build construction of a 5 floor office building for Standard Life Investments in the heart of south west London, off Square.

The mastic work required was to externally seal approximately 60 window bays, pressings and cills, consisting largely of 20mm x 20mm glass to glass butt joints as well as sealant work between the external wall grill vents and new stonework on all floors.

Each window bay totalled around 50m giving a total metreage in the region of 3000m approximately.

APPLICATION: Due to the extremely dusty nature on site from the new stonework, the applicator had to be especially vigilant

in terms of ensuring all substrates to be sealed with silicone sealant was sufficiently clean before any mastic work could be carried out. Once clean, the 996 LM black was used to seal the main 20mm x 20mm vertical glass to glass butt joints on all the window bays on all floors of the building. Special care was taken so that the sealant was correctly tooled smoothly in against adjacent glass edges to ensure maximum adhesion would be achieved between the substrates. The same procedure was also used to seal around the metal ventilation grills and stonework substrate found on every level.

PROJECT START DATE: July 2013

PROJECT COMPLETION DATE: October 2013

PRODUCTS USED:

- Silicone 825
- Silicone 996

Brighton & Hove Albion FC Stadium

CASE STUDY



PROJECT LOCATION: Falmer or AMEX Stadium

MAIN CONTRACTOR: Buckingham Group

PROJECT BACKGROUND: Preparation work began on the site on 17th December 2008 to build the new 22,000 all seated stadium. The stadium itself is set 3 storeys into the ground so a great deal of preliminary work was required before construction could commence, including excavating 138,000 cubic metres of chalk. The brand new £60 million stadium not only provides a home for Brighton & Hove Football Club but is also designed to play host to other sports including hockey and rugby as well as music concerts.

APPLICATION: Products are being used to seal both internal and external areas of the stadium.

Externally they have been used on the terracing on the treads and rises, the joint sizes for which average 25-30mm wide and 10-15mm deep on the verticals and 15-20mm wide by 8-10mm deep on the horizontals. The system used was: for the back seal Fire Sealant 400 applied to give the terracing a fire rating of up to an hour. For the top seal Hybriflex SMP was used to provide a

tougher seal for foot traffic but still have the movement accommodation to cope with the thermal movement within the pre-cast concrete and steel framework of the structure. Where the horizontal seal was not trafficked over, behind the seats 825 LM silicone was used as the top seal instead of Hybriflex SMP.

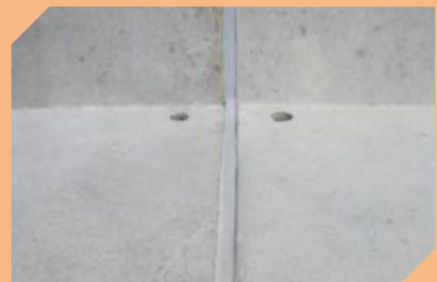
Internally, the S50 sanitary silicone was used to seal around all the sanitary units, basins, toilets, tiled areas to provide a watertight seal with a mould resistant sealant containing a fungicide – average joint size ranged from 6 – 12mm.

PROJECT START DATE: November 2009

PROJECT COMPLETION DATE: May 2011

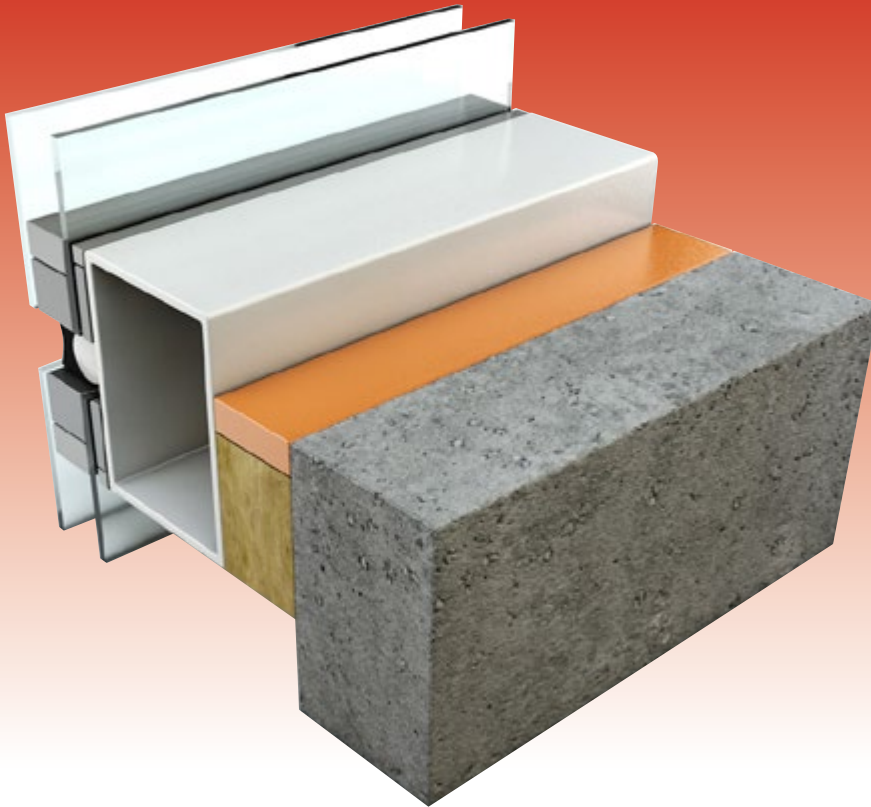
PRODUCTS USED:

- Fire Sealant 400 Silicone
- Hybriflex SMP
- Joint Backer Rod
- Silicone 825
- Silicone S50



Fire & Acoustic Protective Seals

Fire retardant sealing is a crucial consideration in all new design and build specifications. Our offering includes a choice of intumescent acrylic, silicone and hybrid polymer sealants for sealing joints, voids and irregular holes in fire walls, stadium terrace and general fire rated expansion joints tested to BS476, part 20 and BS EN 1366-4 2007 with up to 4 hours fire resistance.



Fire Sealant 300 Intumescent

Fire Sealant 300 is an intumescent and acoustic acrylic sealant that swells when exposed to temperatures in excess of 150°C to prevent the passage of fire and smoke. Typically used for sealing joints up to 50mm wide, voids and irregular holes in fire walls, partitions and other structures; also for maintaining the integrity of pipes and cables that penetrate them. For internal perimeter pointing of fire rated door and window frames.

CHARACTERISTICS AND ADVANTAGES

- Up to 5 hours fire resistance according to EN 1366-4
- Excellent acoustic properties for sound deadening (average reduction of 29dB)
- Excellent non-slump properties for overhead use
- Overpaintable
- Halogen free
- CE marked under ETAG 026 Part 3. Acoustic rated to BS EN ISO 140/3, tested for air permeability to EN 13141-1. EN 1366-3 Assessment Report

PRODUCT INFORMATION

Movement Capability (ISO 9047)	±12.5%
Skinning Time	~10 mins
Cure Rate	~1mm/24hrs

Product Code	Colour	Pack Size	Box Qty	Boxes/Pallet	Pack Barcode
300GY	Grey	380ml	25	48	5029347603984
300WE	White	380ml	25	48	5029347603984
FP300GY6	Grey	600ml	12	75	NO BARCODE
FP300WE6	White	600ml	12	75	NO BARCODE



Fire & Acoustic Protective Seals

Fire Sealant 400

FIRE SEALANT 400 is a neutral cure, elastic low modulus silicone sealant. For joints which require fire rated joints, voids and regular holes in fire walls, partitions and other structures.

CHARACTERISTICS AND ADVANTAGES

- Up to 4 hours resistance according to EN 1366-4
- Adheres to many building surfaces, porous and non porous
- Permanently flexible
- Excellent weathering characteristics – suitable for internal and external use
- Can be used in joints up to 50mm wide
- Very good adhesion to many different substrates
- Non slump – easy to apply and tool off
- Forms an acoustic seal (rated to BS EN ISO 140/3)
- CE marked under ETAG 026 Part 3. Conforms to ISO 11600 F 25 LM and EN 15651-1 F EXT-INT CC 25 LM, Acoustic Rated to BS EN 14013. Air permeability tested to EN 13141-1 ventilation for buildings

PRODUCT INFORMATION

Shore A Hardness (ISO 868)	~20
Movement Capability (ISO 9047)	±25%
Skinning Time	45 mins
Elastic Recovery (ISO 7389)	85%
Elongation at Break	400%

Product Code	Colour	Pack Size	Box Qty	Boxes/Pallet	Pack Barcode
400BK	Black	380ml	25	48	5029347603991
400GY	Grey	380ml	25	48	5029347603991
400WE	White	380ml	25	48	5029347603991

Hybriflex FR

HYBRIFLEX FR is a one part, chemically curing solvent free sealant and adhesive combining the best qualities of silicone and polyurethane technologies. It is specifically designed as a multipurpose floor and wall sealant for all concrete saw cuts and cladding applications and/or slab expansion joints where Fire resistance is required.

CHARACTERISTICS AND ADVANTAGES

- Up to 4 hours fire resistance according to EN 1366-4
- Good slump and abrasion resistance
- Excellent resistance to chemicals and petrol (10% dilute acids, alkalis, most solvent)
- Good flexibility
- Overpaintable with most paints (compatibility test should be made prior to full scale application)
- Conforms to EN 15651-1 F EXT-INT CC F 20 HM, EN 15651-4 and PW EXT-INT CC 12.5E

PRODUCT INFORMATION

Shore A Hardness (ISO 868)	30-40
Movement Capability (ISO 9047)	±20%
Elastic Recovery (ISO 7389)	>70%
Elongation at Break (ISO 8339)	>250%

Product Code	Colour	Pack Size	Box Qty	Boxes/Pallet	Pack Barcode
FPHYBFRGY	Grey	600ml	12	75	No Barcode





PROJECT LOCATION: London

MAIN CONTRACTOR: McAlpine

PROJECT BACKGROUND:

For the first time since 1948, London will be playing host to the Olympic Games in 2012.

Costing in the region of £496m to build, the Olympic Stadium is on a peninsula, with waterways on three sides. Construction officially started on 22 May 2008. A 20m-high "wrap" will encircle the 900m circumference, decorated with historical sporting champions, participating countries' flags and sponsor logos.

The 80,000-seat stadium is expected to be converted into a 25,000 capacity venue after the Games.

APPLICATION:

Expansion joints in main stadium: Expansion joint widths range from 50mm to 70mm. Depth 15mm to 30mm deep. Back seal Fireseal 400 to give the fire rating.

Top seal Hybriflex SMP to give a tougher seal for extra protection but still giving 25% plus or minus movement accommodation. On completion of the joints a movement plate will be placed over the top of the joint as joints of this size can not take foot traffic.

There are 1100mtrs of expansion joint to fill totalling 2200mtrs all together.

PROJECT START DATE: March 2009

PROJECT COMPLETION DATE: June 2010

PRODUCTS USED:

- Fire Sealant 400 Silicone
- Hybriflex SMP
- Sealant Primer P1



Sanitary & Hygienic Sealants

Mould growth on sealants is one of the most common complaints with regards to internal use of silicones. Within the range, we offer a comprehensive choice of specialist sealants to use around all types of baths, shower trays, ceramic tiles as well as floor joints in food preparation and storage areas. All our sanitary grade sealants contain a powerful anti fungal compound to help prevent mould and fungal growth in areas of high humidity, including a specialist anti bacterial sealant for use in clean rooms and hospitals.



Silicone S50

SILICONE S50 is a mid modulus, acetoxy curing silicone sealant containing a powerful anti fungal compound to prevent mould and fungal growth in areas of high humidity like kitchens, bathrooms and wetrooms.

CHARACTERISTICS AND ADVANTAGES

- High viscosity formula for quick easy tooling
- Flexible
- Conforms to ISO 11600 F&G 20 LM, EN 15651-1 F EXT-INT CC F 20 LM, EN 15651 2 G CC G 20 LM and EN 15651-3 S XS1



PRODUCT INFORMATION

Shore A Hardness (ISO 868)	~15
Movement Capability (ISO 9047)	±20%
Skimming Time	~15 mins
Curing Rate	3-4mm/24hrs
Elastic Recovery (ISO 7389)	>80%

Product Code	Colour	Pack Size	Box Qty	Boxes/Pallet	Pack Barcode
S50JAS	Jasmine	310ml	25	64	5029347604844
S50MAN	Manhat Gy	310ml	25	64	5029347604844
S50TR	Trans	310ml	25	64	5029347604844
S50WE	White	310ml	25	64	5029347604844



565 Clean Room Silicone

EVERFLEX 565 CLEANROOM SILICONE (replacement for Forever Safe) is a high modulus, FDA approved, neutral cure, odourless silicone sealant for perimeter sealing, internal windows and doors.

CHARACTERISTICS AND ADVANTAGES

- Mould Resistant for up to 10 years AATCC
- Excellent tooling and slow skinning properties for industrial/large scale applications).
- Excellent adhesion properties to most surfaces including glass, metal, plastics, wood (painted/unpainted) uPVC and Polycarbonate
- Suitable for medical and sterile areas including hospitals and cleanrooms
- High viscosity non-slump formula
- Resistant to hydrogen peroxide and formaldehyde
- Conforms to ISO 11600 F 25 LM, EN 15651-1 F EXT-INT CC F 25 LM and EN 15651-3 S XS1. Bacterial Resistance according to ISO 22196 (Escherichia coli, Staphylococcus aureus)

PRODUCT INFORMATION

Shore A Hardness (ISO 868)	20-30
Movement Capability (ISO 9047)	±25%
Skimming Time	30-45 mins
Elastic Recovery (ISO 7389)	>80%

Product Code	Colour	Pack Size	Box Qty	Boxes/Pallet	Pack Barcode
565WE	White	C3	25	64	5029347612399



Silicone HM60

SILICONE HM 60 is a mid modulus, acetox curing silicone sealant that contains a powerful anti fungal compound to prevent mould and fungal growth in areas of high humidity. Specifically designed for use in bathrooms and kitchens and other sanitary areas.

CHARACTERISTICS AND ADVANTAGES

- High viscosity formula for quick easy tooling
- Flexible
- Waterproof seal

PRODUCT INFORMATION

Movement Capability (ISO 9047)	±25%
Curing Rate	3-4mm/24 hrs
Elongation at Break (ISO 8339)	>250%
Skimming Time	~15 mins

Product Code	Colour	Pack Size	Box Qty	Boxes/Pallet	Pack Barcode
HM60WE	White	310ml	25	64	5029347610289



Royal London Hospital

CASE STUDY



PROJECT LOCATION: London

MAIN CONTRACTOR: Skanska

PROJECT BACKGROUND: The Royal London Hospital was founded in September 1740, originally known as The London Infirmary. The project was to expand and update the hospital by building 3 new hospital towers in the center of London, North Tower (10 floors), Central and South Towers (both 16 floors). The new Royal London Hospital is a state of the art healthcare facility, and is home to a range of specialist services.

Application of silicone sealant in interior areas of wards, hallways, toilets, sanitary areas, worktops, specialist high anti-bacterial areas.

APPLICATION: S50 white – interior upvc window frames/cills, all toilet&sanitary units, all worktop desk areas inside the wards and hallways. 10mmx6mm fillet joints throughout.

S50 trans – used to vertically seal behind the stainless steel bed pan washers to the wall

Foreversafe white – all utility rooms where higher level of anti-bacterial required – eg xray rooms, cardiology rooms etc. as well as the bedheads in each ward. 10mmx6mm fillet joints throughout..

PROJECT START DATE: April 2011

PROJECT COMPLETION DATE: July 2011

PRODUCTS USED:

- 565 Clean Room Silicone
- Silicone S50



Sika Sanisil®

Sika® Sanisil is an acetoxycuring silicone sealant for sealing around baths, showers, kitchen units and worktops. Containing a powerful anti-fungal compound, it provides long term resistance to fungus and mildew. Can be used internally and externally. Sticks well to ceramics, acrylic, laminates, metals, glass.

CHARACTERISTICS AND ADVANTAGES

- Long term fungus and mildew resistance
- Excellent UV and weathering resistance
- Solvent free
- High elasticity and flexibility
- Quick curing
- Low dirt pick up
- Conforms to EN 15651-1 F EXT-INT CC 25 LM, EN 15651-2 G CC 25 LM, EN 15651-3 S XS2

PRODUCT INFORMATION

Shore A Hardness (ISO 868)	~10-20
Movement Capability (ISO 9047)	±20%
Skimming Time	~10 mins
Cure Time	3mm/24 hrs
Elongation at Break (DIN 53504)	>500%

Product Code	Colour	Pack Size	Box Qty	Boxes/Pallet	Pack Barcode
SKSANISILCL	Clear	300ml	12	96	3240240006050
SKSANISILWE	White	300ml	12	96	3240240006043



CE

Sikaflex® PRO-3

Sikaflex® PRO-3 is a one part, moisture curing, elastic joint sealant based on i-Cure Technology Polyurethane for movement and connection joints in floors in pedestrian and traffic areas, warehouse and production areas, applications in the food industry, sewage treatment plants, tunnel construction and in cleanrooms.

CHARACTERISTICS AND ADVANTAGES

- Bubble-free curing
- Very good mechanical and chemical resistance
- Very good adhesion to most construction materials
- Conforms to EN 15651-4 PW EXT-INT CC 25 HM, ISO 11600 F 25 HM and ASTM C 920, Class 35. Tested according principals of DIBT for Waste Water Exposure and against diesel and jet fuel. EMICODE EC1 PLUS R, very low emission. Approved according to ISEGA for foodstuff area and for cleanroom (CSM Biological Resistance and CSM TVOC) and Drinking Water Contact (BS 6920)

PRODUCT INFORMATION

Shore A Hardness (ISO 868)	~37
Movement Capability (ISO 9047)	±25%
Elastic Recovery (ISO 7389)	>90%
Elongation at Break	>600%
Tear Propagation Resistance (ISO 34)	~8 N/mm

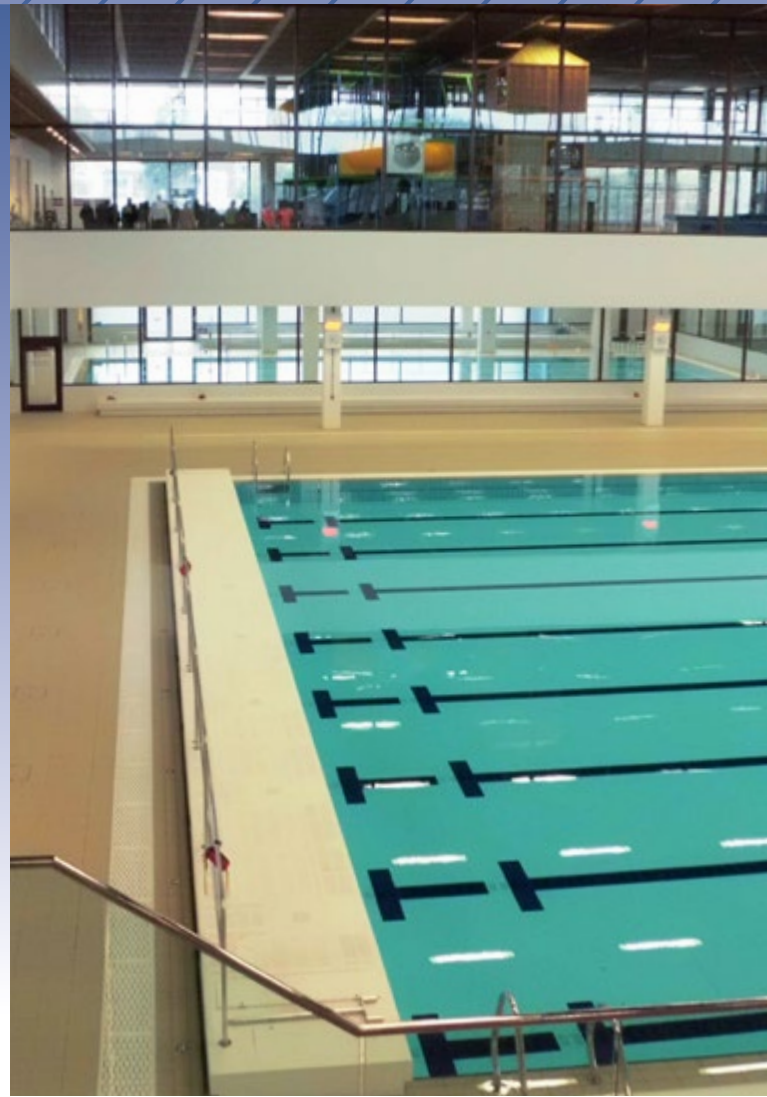
Product Code	Colour	Pack Size	Box Qty	Boxes/Pallet	Pack Barcode
FPSKPRO3GY6	Grey	600ml	20	48	7612894878349
FPSKPRO3BK6	Black	600ml	20	48	7612894878387
FPSKPRO3WE6	White	600ml	20	48	7612894878400



CE

Swimming Pools

The leisure industry is another specific area that is covered by our products providing specialist sealant solutions for sports halls and leisure facilities. We manufacture a complimentary range of high chlorine resistant one part silicones and 2 part epoxy products for use in joints in and around swimming pools, areas under permanent water immersion as well as wet rooms, shower areas.



Sikasil® Pool

Sikasil®-Pool is a one part, neutral curing silicone sealant for use around swimming pools and permanently wet areas. Suitable for joints around swimming pools, areas under permanent water immersion and frequently wet areas between ceramics, tiles, concrete, glass and metals etc.

CHARACTERISTICS AND ADVANTAGES

- Very good water resistance
- High chlorine resistance (as required in swimming pools due to use of disinfecting solutions)
- Extremely high resistance to fungal attack
- Non-corrosive
- High elasticity and flexibility

PRODUCT INFORMATION

Shore A Hardness (ISO 868)	~20
Movement Capability (ISO 9047)	±25%
Skinning Time	~15 mins
Elastic Recovery (ISO 7389)	>90%

Product Code	Colour	Pack Size	Box Qty	Boxes/Pallet	Pack Barcode
SKSILPOOLGY	Grey	C3	12	46	7612894590906
SKSILPOOLWE	White	C3	12	46	7612894609400
SKSILPOOLTR	Trans	C3	12	46	7612894609523



Stayseal 75 Non Pick

STAYSEAL 75 NON-PICK is a two part easy to mix epoxy sealant which cures to form a hard, pick-resistant seal accommodating small movement in extension and large movement in compression. Ideal for use in secure environments, giving a vandal resistant seal. Also suitable for perimeter sealing cell windows and doors and sanitaryware, and around showrooms and swimming pools.

CHARACTERISTICS AND ADVANTAGES

- Excellent impact, wear and chemical resistance
- Resistant to picking
- Suitable for permanent water immersion
- Good UV resistance

PRODUCT INFORMATION

Shore D Hardness (ISO 868)	60-70
Movement Capability (ISO 9047)	5% tension - 50% compression
Compressive Strength	50 N/mm ²
Tensile Strength	15 N/mm ²

Product Code	Colour	Pack Size	Box Qty	Boxes/Pallet	Pack Barcode
STAYSEAL75GY	Grey	1.2L	4	64	5029347608897
STAYSEAL75WE	White	1.2L	4	64	5029347608934



Commonwealth Pool Scotland

CASE STUDY



PROJECT LOCATION: Edinburgh

MAIN CONTRACTOR: Graham Construction

PROJECT BACKGROUND: The Royal Commonwealth Swimming Pool in Edinburgh, one of Scotland's main swimming pools housed in a Grade-A listed building, was closed for refurbishment in August 2009 to repair unsuitable facilities. The project in total cost £37.18 million and includes new 82 ft diving and teaching pools, plus refurbishment of the café, reception, changing rooms and the main, Olympic sized swimming pool. The refurbished pool reopened to the public on the 21st March 2012. The pool will be used as one of the main training sites for the London 2012 Olympic Games and the Glasgow 2014 Commonwealth Games.

APPLICATION: Silicone 825 Black – A 3mm bead was used on all windows and doors from glass to timber frame both externally and internally.

Puraflex K11 White – A 5mm bead was used on expansion joints and applied on all door frames in chlorinated areas. Stayseal NP 75 White – A 3mm bead was used from the top of every skirting tile to wall in all pool and wet areas. Silicone S50 White – This was used in all sanitary areas, internal corners and IPS panels in all first floor, dry area toilets. Silicone 450 White – This was used on all mirrors in the wet areas. Silicone 825 Grey – This was used on external louvers and door thresholds.

PROJECT START DATE: 2010

PROJECT COMPLETION DATE: March 2012

PRODUCTS USED:

- Puraflex 25
- Silicone 825
- Silicone S50
- Stayseal 75 Non Pick

Secure Environments

Working on numerous Ministry of Justice, Home Office and National Offender projects across the UK has enabled us to develop specialist sealant products in this key area that have a proven record of being fit for purpose. There is the choice of fully non-pick 2 part epoxies for high risk areas such as Category A prisons, to finger non-pick sealants for lower risk situations such as Mental Health Hospitals to replace standard sealant joint applications where small amounts of movement is required.



Anti Pick 109

ANTI PICK 109 is a one part, chemically curing solvent free sealant based on Hybrid Technology. Anti Pick 109 has been specifically formulated to provide a degree of resistance to finger picking answering the need for a harder to pick by hand seal (in comparison to traditional sealants) where a small movement capability is required.

CHARACTERISTICS AND ADVANTAGES

- Excellent impact and wear resistance, resistant to picking by fingers
- Excellent primerless adhesion to most surfaces, including metals, most plastics, glass, polyester
- High UV and aggressive atmosphere resistance
- Excellent chemical and mechanical resistance
- Overpaintable
- Conforms to EN 15651-1 F EXT-INT CC 12.5E

PRODUCT INFORMATION

Shore A Hardness (ISO 868)	~50
Movement Capability (ISO 9047)	±12.5
Tensile Strength (ISO 8339)	>1.3 N/mm ²
Elastic Recovery (ISO 7389)	>80%
Curing Rate	2mm/24 hrs

Product Code	Colour	Pack Size	Box Qty	Boxes/Pallet	Pack Barcode
ANTIP109GY	Grey	C3	25	64	5029347610210
ANTIP109SL	Soft Linen	C3	25	64	5029347610210
ANTIP109WE	White	C3	25	64	5029347610210



Hybriflex 55

HYBRIFLEX 55 is a one part, neutral cure, hybrid polymer based adhesive which adheres to most common building substrates. Used for general bonding and sealing in industry, engineering, construction and O.E.M markets.

CHARACTERISTICS AND ADVANTAGES

- High bond strength
- Excellent adhesion to most construction substrates
- Permanently flexible
- Immediately over paintable with most common paint types
- Excellent initial grab properties
- Isocyanate, silicone and halogen free

PRODUCT INFORMATION

Shore A Hardness (ISO 868)	55-60 (1 week)
Skinning Time	30-45 mins
Elastic Recovery (ISO 7389)	>75%
Elongation at Break (ISO 8339)	>100%

Product Code	Colour	Pack Size	Box Qty	Boxes/Pallet	Pack Barcode
FPHYB55GY	Grey	600ml	12	60	NO BARCODE
FPHYB55WE	White	600ml	12	60	NO BARCODE



Sikadur®-33

Sikadur®-33 is a two component, solvent free, cold cure, thixotropic epoxy resin structural adhesive and repair mortar. It is supplied in a cartridge with an in-line mixer tip and is designed for application using a geared sealant gun.

CHARACTERISTICS AND ADVANTAGES

- Bonds all types of construction materials including: concrete, brick, plaster, stone, ceramics, polyester, epoxy, glass, steel, iron, aluminium and timber
- Levelling and pointing
- Blowhole/pore hole filling
- Crack and surface sealer
- Tested according to EN 1504-4

PRODUCT INFORMATION

Layer Thickness	0.5mm min/10mm max
Compressive Strength	~50N/mm ² (14 days/23°C)
Flexural Strength	~20N/mm ² (14 days/23°C)
Tensile Strength	10-15N/mm ² (14 days/23°C)

Product Code	Colour	Pack Size	Box Qty	Boxes/Pallet	Pack Barcode
SKDUR33	Grey	250ml	12	75	7612894403688



Secure Environments

Stayseal 75 Non Pick

STAYSEAL 75 NON-PICK is a two part easy to mix epoxy sealant which cures to form a hard, pick-resistant seal accommodating small movement in extension and large movement in compression. Ideal for use in secure environments, giving a vandal resistant seal. Also suitable for perimeter sealing cell windows and doors and sanitaryware, and around showrooms and swimming pools.

CHARACTERISTICS AND ADVANTAGES

- Excellent impact, wear and chemical resistance
- Resistant to picking
- Suitable for permanent water immersion
- Good UV resistance

PRODUCT INFORMATION

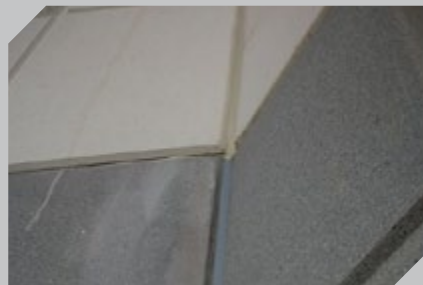
Shore D Hardness (ISO 868)	60-70
Movement Capability (ISO 9047)	5% tension - 50% compression
Compressive Strength	50 N/mm ²
Tensile Strength	15 N/mm ²

Product Code	Colour	Pack Size	Box Qty	Boxes/Pallet	Pack Barcode
STAYSEAL75GY	Grey	1.2L	4	64	5029347608897
STAYSEAL75WE	White	1.2L	4	64	5029347608934



H.M. Prisons

CASE STUDY



PROJECT LOCATION: Nationwide

MAIN CONTRACTORS: Carillion, Galliford Try, Interserve, Kier Build

APPLICATION:

STAYSEAL 75: All areas inside the cells – including inside the door frame to corridor, around all sanitary units (toilet, basin), around the shower head, around all power sockets, around the strip lights, around bed and all furniture (including onto floor line), around layed floor to wall fillet joint.

ANTI-PICK 109 SEALANT: To seal the beams and vertical concrete slab joints in the education block. To seal the ceiling joints in the education block. Internal head joint of block work wall in education block as a dual seal in conjunction with our Fire Sealant 300 and using a bond breaker tape. For any other general internal sealant work where the residents have supervised lower risk access to.

PURAFLEX 40: To seal the external concrete slab walkway around the cell block perimeter, consisting of: 30mm floor to cell block wall joint (untrafficked). 20mm recessed floor joint in concrete (trafficked), including around drain areas.

FIRE SEALANT 300 INTUMESCENT ACRYLIC: Internal head joint of block work wall in education block as a dual seal in conjunction with our Antipick 109 and using a bond breaker tape.

PRODUCTS USED:

- Anti Pick 109
- Fire Sealant 300 Intumescent
- Puraflex 40
- Stayseal 75 Non Pick

Primers & Ancillaries

With any specialist sealant and bonding application the preparation of the joint is as important, if not more so, than the correct application of the sealant itself. We have a number of activators and primers for porous and non-porous substrates, circular joint backer rod as well as a range of applicator guns to make us a one stop shop for all your sealant applicator needs.



Sika® Primer-3N

Sika®Primer-3N is a one component, epoxy-polyurethane solvent based primer.

CHARACTERISTICS AND ADVANTAGES

- Easy to apply
- Good wetting out properties
- Suitable for use on matt-moist substrate



PRODUCT INFORMATION

Chemical Base	Hybrid, 1-part
Curing Rate	mm / 24 h approx 23°C / 50% r.h.
Shore A Hardness	N/A
Approvals	BS ISO 11600 F 20% HM

Product Code	Colour	Pack Size	Box Qty	Boxes/ Pallet	Pack Barcode
SKPRIME3N1		1ltr	1	384	7612894543216

Sealant Primer NP2

EVERBUILD SEALANT PRIMER NP2 is a solvent based, polyorganosiloxane primer for use on Non Porous surfaces prior to applying all common types of silicone, polyurethane and hybrid sealants.

CHARACTERISTICS AND ADVANTAGES

- Works on most common non porous building materials
- Works with all common silicone types
- Can also be used with PU and hybrid based sealants



PRODUCT INFORMATION

Chemical Base	Hybrid, 1-part
Curing Rate	mm / 24 h approx 23°C / 50% r.h.
Shore A Hardness	N/A
Approvals	BS ISO 11600 F 20% HM

Product Code	Colour	Pack Size	Box Qty	Boxes/ Pallet	Pack Barcode
SILPRIMENP2		1LTR	1	0	NO BARCODE

Sika® Aktivator-205

Sika® Aktivator-205 is an alcohol solution containing a bond-activating substance designed for the activation of non-porous surfaces prior to bonding and sealing with Sikaflex® products.

CHARACTERISTICS AND ADVANTAGES

- Ideal for non porous substrates such as metals, plastics, enamelled glass (ceramics) and painted surfaces
- Manufactured in accordance with ISO 9001/14001 quality assurance system.



PRODUCT INFORMATION

Chemical Base	Hybrid, 1-part
Curing Rate	mm / 24 h approx 23°C / 50% r.h.
Shore A Hardness	N/A
Approvals	BS ISO 11600 F 20% HM

Product Code	Colour	Pack Size	Box Qty	Boxes/ Pallet	Pack Barcode
SKAKT20502	Clear	250ml	1	1465	7612894058796
SKAKT2051	Clear	1ltr	1	452	7612894511383

Sealant Primer P1

EVERBUILD SEALANT PRIMER P1 is a solvent based, polyorganosiloxane primer for use on porous surfaces prior to applying all common types of silicone, polyurethane and hybrid sealants.

CHARACTERISTICS AND ADVANTAGES

- Works on most common porous building materials
- Acts as a primer for dusty screeds
- Works with all common silicone types
- Can also be used with PU and hybrid based sealants



PRODUCT INFORMATION

Chemical Base	Hybrid, 1-part
Curing Rate	mm / 24 h approx 23°C / 50% r.h.
Shore A Hardness	N/A
Approvals	BS ISO 11600 F 20% HM

Product Code	Colour	Pack Size	Box Qty	Boxes/ Pallet	Pack Barcode
SILPRIMEP1		1LTR	1	0	NO BARCODE

Joint Backer Rod

BACKER ROD is a non absorbent, compressible grey closed cell polyethylene (P.E) foam backup material.

CHARACTERISTICS AND ADVANTAGES

- Quick and easy to apply.
- Reduces sealant usage
- Improves sealant performance by obtaining easily the correct joint dimensions.
- Flexible – won't bubble or blister.



Product Code	Colour	Pack Size	Box Qty	Boxes/ Pallet	Pack Barcode
BACK10	Grey	10mm x 1150mt	1	12	NO BARCODE
BACK12	Grey	13mm x 750mt	1	12	NO BARCODE
BACK15	Grey	15mm x 550mt	1	12	NO BARCODE
BACK19	Grey	20mm x 350mt	1	12	NO BARCODE
BACK25	Grey	25mm x 200mt	1	12	NO BARCODE
BACK31	Grey	30mm x 160mt	1	12	NO BARCODE

WONDER WIPES Bacon, Egg & Silicone?

Wonder Wipes have been improving the taste of the Nation's Builders sandwiches for nearly 10 years. These remarkable handy wipes are still removing paint, sealant, adhesive, grease, foam and even silicone from work surfaces, tools and of course hands. And now the original multi-use wipes have been joined by a heavy duty textured wipe, for even easier cleaning.



Multi Use Wonder Wipes

Multi-Use Wonder Wipes are specially formulated to clean hands, tools and surfaces from wet and semi-cured paint, sealant, adhesive, bitumen, expanding foam, oil, grease and even silicone. Useful when there is no water on site.

Wonder Wipes now contain a powerful Anti-Bacterial Additive that is tested by an independent laboratory to BSEN 1276:2009 and PREN 12054:1995 – the standards for killing bacteria on dirty surfaces and hands. Wonder Wipes are active against most common bacteria found in the home and workplace. See independent test results for details.



Product Code	Colour	Pack Size	Box Qty	Boxes/ Pallet	Pack Barcode
WIPE80	-	100	6	52	5029347601522
GIANTWIPE	-	300	1	92	5029347604172

Heavy Duty Wonder Wipes

Heavy Duty Wonder Wipes are textured wipes which are specially formulated for the building, engineering and allied trades to clean ingrained dirt from hands, tools and surfaces.

Contain a powerful Anti-Bacterial Additive that is tested by an independent laboratory to BSEN 1276:2009 and PREN 12054:1995 – the standards for killing bacteria on dirty surfaces and hands. Wonder Wipes are active against most common bacteria found in the home and workplace. See independent test results for details.



Product Code	Colour	Pack Size	Box Qty	Boxes/ Pallet	Pack Barcode
WIPEHD75	-	75	6	52	5029347609467

Power Pro Sealant Gun

The ultimate heavy duty sealant gun, extra pull trigger, hook end and swivel action barrel for both 310ml and 400ml cartridges.



Product Code	Colour	Pack Size	Box Qty	Boxes/ Pallet	Pack Barcode
SGNEWPOWER	-	C4	6	70	5029347600945

Professional Sealant Gun

Sturdy skeleton gun with hexagonal rod and re-enforced ring and hook end.



Product Code	Colour	Pack Size	Box Qty	Boxes/ Pallet	Pack Barcode
SG400	-	C4	12	90	5029347600952

For further information,
please visit the Tecnic
website:
www.everbuild-tecnic.co.uk

Foil Pack Applicator Gun

The Foil Pack applicator gun is designed for use with foil packs, the enclosed aluminium barrel can also be used for standard cartridges.



Product Code	Colour	Pack Size	Box Qty	Boxes/ Pallet	Pack Barcode
SGCOMBIG	-	600ML	1	180	5029347600808
SGCOMBINOZ	-	-	1	500	5029347600815

Seal Rite Strip-Out Smooth-Out Twin Pack

A Twin pack with Strip-Out Tool for easy sealant removal and Smooth-Out Tool to create the perfect seal. Ideal for use with Everbuild Silicone Sealants.



Product Code	Colour	Pack Size	Box Qty	Boxes/ Pallet	Pack Barcode
SRSTWIN	-	-	12	90	5029347609603



Colour Chart

WHITE



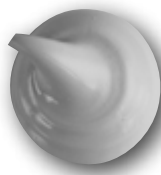
Silicone 825
Fire Sealant 300
Fire Sealant 400
Silicone S50
Silicone 950
Silicone HM60
Stayseal 75
Antipick 109
SikaHyflex® -250 Façade
Hybriflex 25LM
Hybriflex 55
Puraflex 25
Puraflex 40
Sikaflex® -11FC+
Sikaflex® PRO-3
565 Clean Room Silicone
Sika® Sanisil®
SikaSil® Pool

GREY



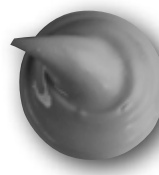
Fire Sealant 300
Fire Sealant 400
Stayseal 75
Antipick 109
SikaHyflex® -250 Façade
Hybriflex FL
Hybriflex FR
Hybriflex 55
Hybriflex SMP
Puraflex 25
Puraflex 40
SikaBond® AT Universal
Sikaflex® Construction +
Sikaflex® -11FC+
Sikaflex® PRO-3
Sikaflex® Floor
Sikaflex® -Tank N
SikaSil® Pool
Sikadur® -33

MID GREY



Silicone 825

DARK GREY



Silicone 825
SikaHyflex® -250 Façade

ANTHRACITE



Silicone 825

MAGNOLIA



Silicone 825

PORTLAND STONE



Silicone 825
Hyflex 250

BEIGE



Silicone 825

BUFF



Silicone 825
Puraflex 25

BROWN



Silicone 825
Puraflex 25

BRICK RED



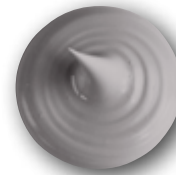
Silicone 825

CREAM IVORY



SikaHyflex® -250 Façade

CONCRETE GREY



SikaHyflex® -250 Façade
Sikaflex® PRO-3 SL

BASALT GREY



SikaHyflex® -250 Façade

MANHATTAN GREY



Silicone S50

LIMESTONE WHITE



Silicone 825

JASMINE



Silicone S50

SOFT LINEN



Anti-Pick 109

CLEAR/TRANSLUCENT



Silicone S50
Silicone 996
SikaSil® Pool
Sika® Sanisil®

BLACK



Silicone 825
Silicone 996
Fire Sealant 400
Sikaflex® -11FC+
Sikaflex® PRO-3
Puraflex 25
Puraflex 40

Whilst every effort is made to ensure faithful colour reproduction -
Owing to printing limitations, the colours on this page will not match exactly.
Applied colour samples are available on request.

Sealant Calculator

METRES PER 310ML CARTRIDGE

		WIDTH (mm)									
		3	6	8	10	12	15	18	20	25	30
DEPTH (mm)	3	34.4	17.2	12.9	10.3	8	6.9	5.7	5.2	4.1	
	6	17.2	8.6	6.5	5.2	4.3	3.4	2.9	2.6	2.1	
	8	12.9	6.5	4.8	3.9	3.4	2.6	2.2	1.9	1.6	
	10	10.3	5.2	3.9	3.1	2.6	2.1	1.7	1.5	1.2	1
	12	8.6	4.3	3.2	2.6	2.2	1.7	1.4	1.3	1	0.8
	15	6.9	3.4	2.6	2.1	1.7	1.4	1.2	1	0.8	0.7
	18	5.7	2.9	2.2	1.7	1.4	1.1	1	0.9	0.7	0.6
	20	5.2	2.6	2	1.6	1.3	1	0.9	0.8	0.6	0.5

METRES PER 380ML CARTRIDGE

		WIDTH (mm)									
		3	6	8	10	12	15	18	20	25	30
DEPTH (mm)	3	42.2	21.1	16	12.6	10.5	8.5	7	6.4	5	
	6	21.1	10.5	7.9	6.4	5.3	4.2	3.5	3.1	2.6	
	8	15.9	7.9	6	4.8	4.2	3.1	2.7	2.4	1.9	
	10	12.6	6.4	4.8	3.8	3.1	2.6	2.1	1.9	1.5	1.3
	12	10.5	5.3	4	3.1	2.7	1.8	1.6	1.2	1.2	1
	15	8.5	4.2	3.1	2.6	2.1	1.7	1.4	1.2	1	0.8
	18	7	3.5	2.7	2.1	1.8	1.4	1.2	1.1	0.8	0.7
	20	6.7	3.3	2.5	2	1.7	1.3	1.1	1	0.7	0.6

METRES PER 600ML FOIL

		WIDTH (mm)									
		3	6	8	10	12	15	18	20	25	30
DEPTH (mm)	3	66.6	33.3	25	20	16.6	13.3	11.1	10	8	6.6
	6	33.3	16.6	12.5	10	8.3	6.6	5.5	5	4	3.3
	8	25	12.5	9.3	7.5	6.2	5	4.1	3.7	3	2.5
	10	20	10	7.5	6	5	4	3.3	3	2.4	2
	12	16.6	8.3	6.2	5	4.1	3.3	2.7	2.5	2	1.6
	15	13.3	6.6	5	4	3.3	2.6	2.2	2	1.6	1.3
	18	11.1	5.5	4.1	3.3	2.7	2.2	1.8	1.6	1.3	1.1
	20	10	5	3.7	3	2.5	2	1.6	1.5	1.2	1
	25	8	4	3	2.4	2	1.6	1.3	1.2	0.9	0.8

METRES PER LITRE

		WIDTH (mm)									
		3	6	8	10	12	15	18	20	25	30
DEPTH (mm)	3	111.1	55.6	41.7	33.3	27.8	22.2	18.5	16.7	13.3	
	6	55.6	27.8	20.8	16.7	13.9	11.1	9.3	8.3	6.7	
	8	41.7	20.8	15.6	12.5	11.1	8.3	6.9	6.3	5	
	10	33.3	16.7	12.5	10	8.3	6.7	5.6	5	4	
	12	27.8	13.9	10.4	8.3	6.9	5.6	4.6	4.2	3.3	
	15	22.2	11.1	8.3	6.7	5.6	4.4	3.7	3.3	2.7	
	18	18.5	9.3	6.9	5.6	4.6	3.7	3.1	2.8	2.2	

SIKA FULL RANGE SOLUTIONS FOR CONSTRUCTION:



LIQUID APPLIED ROOFING



SINGLE PLY ROOFING



CONCRETE



CONCRETE REPAIR



STRUCTURAL STRENGTHENING



WATERPROOFING



JOINT SEALING



FAÇADE STRUCTURAL ADHESIVES



FLOORING



INDUSTRY



DISTRIBUTION



BUILDING TRUST

FOR MORE INFORMATION:



WHO WE ARE

Sika Limited and Sika Ireland Limited are part of the global Sika Group, specialising in the manufacture and supply of chemical based products. Sika have a leading position in the development and production of systems and products for bonding, sealing, damping, reinforcing, and protecting in the building sector and the motor vehicle industry. Sika has subsidiaries in 101 countries around the world and manufactures in over 200 factories. With more than 20,000 employees Sika generates annual sales of CHF 7.09 billion (£5.45bn). We are also committed to providing quality, service, safety and environmental care.

In the UK and Ireland, we provide market-leading solutions for concrete, waterproofing, roofing, flooring, refurbishment, sealing & bonding, and industry, and have manufacturing sites in Welwyn Garden City, Preston, Leeds and Dublin with more than 870 employees and a turnover of more than £260 million.

The information, and, in particular, the recommendations relating to the application and end use of Sika® products, are given in good faith based on Sika's current knowledge and experience of the products when properly stored, handled and applied under normal conditions. In practice, the differences in materials, substrates and actual site conditions are such that no warranty in respect of merchantability or of fitness for a particular purpose, nor any liability arising out of any legal relationship whatsoever, can be inferred either from this information, or from any written recommendations, or from any other advice offered. The proprietary rights of third parties must be observed. Please refer to our homepage www.sika.co.uk for our current standard terms & conditions applicable to all orders. Users should always refer to the most recent issue of the Product Data Sheet for the product concerned, copies of which will be supplied on request.



A SIKA COMPANY

Everbuild - A Sika Company

Site 41, Knowsthorpe Way
Cross Green Industrial Estate
Leeds
LS9 0SW
United Kingdom

Contact

Sales Phone +44 113 240 2424
Gen Phone: +44 113 240 3456
Fax +44 113 240 0024
E-Mail everbuild-tecnic@uk.sika.com
www.everbuild-tecnic.co.uk

SIKA IRELAND LIMITED

Sika House
Ballymun Industrial Estate
Dublin 11
D11 DA2V
Ireland

Contact

Phone +353 1 862 0709
Fax +353 1 862 0707
E-Mail info@everbuild.eu
www.everbuild-tecnic.com



BUILDING TRUST

