



YOUR TRUSTED PARTNER FOR  
HOSPITALS & HEALTHCARE  
FACILITIES

**BUILDING TRUST**



# CHALLENGES IN HOSPITALS AND HEALTHCARE FACILITIES

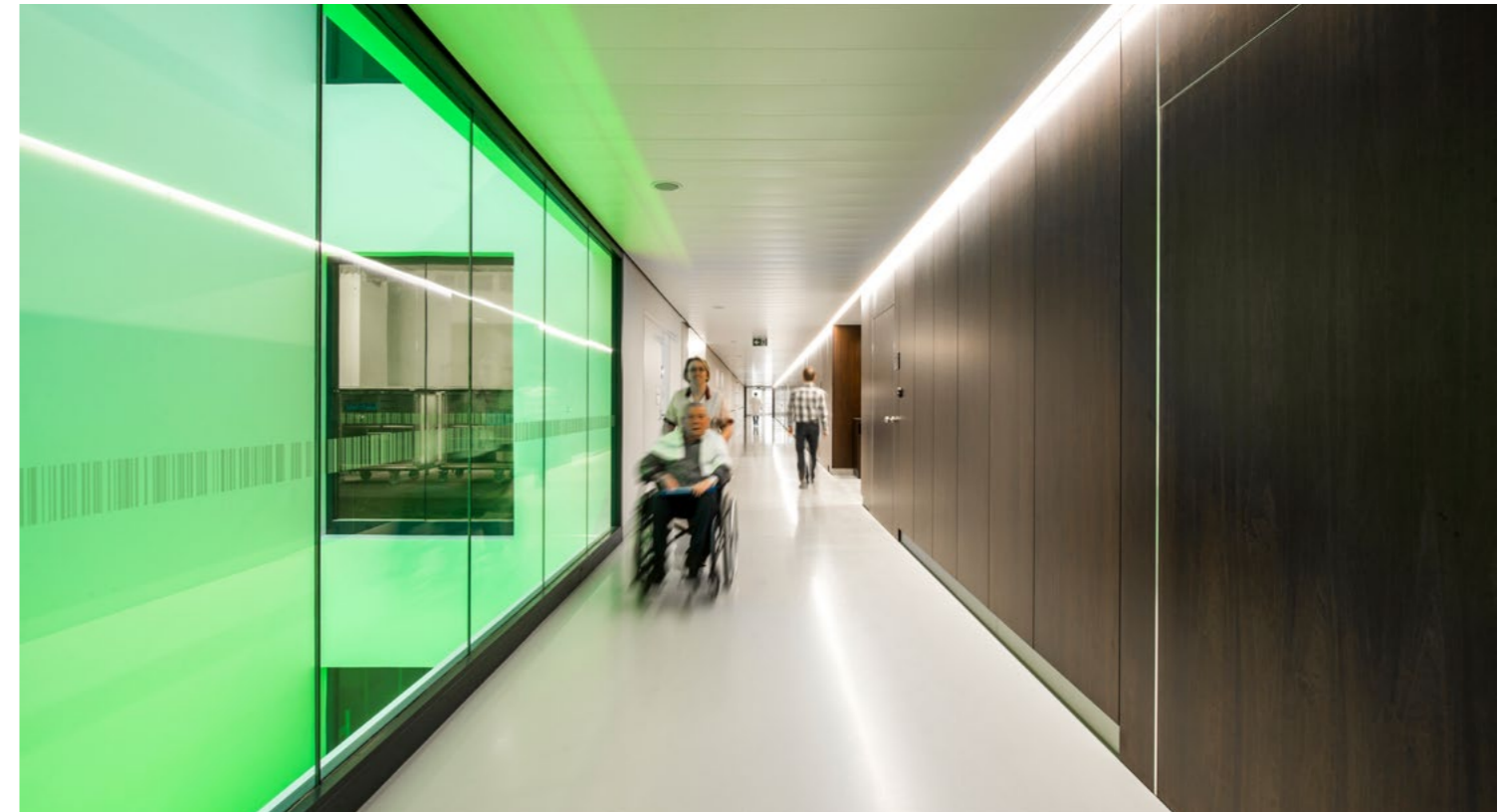
## YOUR TRUSTED PARTNER

At Sika, we understand the unique challenges and responsibilities involved in constructing and maintaining hospitals and healthcare facilities. From hygiene-sensitive spaces to demanding safety and regulatory requirements, every detail matters – and we're here to help you get it right.

We offer a complete range of high-performance construction solutions, supporting your entire project from basement to roof. Whether you're building a new hospital wing or refurbishing an existing healthcare facility, Sika simplifies the process with a single, reliable partner for all your needs. We ensure quality through tailored project support and collaboration with skilled applicators.

Innovation is at the core of everything we do. Our advanced technologies deliver proven durability, outstanding efficiency, and long-term performance – helping you keep projects on schedule, on budget, and aligned with the highest standards of patient care. And with sustainability built into our solutions, you can be confident your facility meets today's environmental expectations.

From hygienic, easy-to-clean flooring systems to watertight roofing and protective facades that safeguard against moisture and costly damage, every element of your healthcare facility must perform. No one understands these challenges better than Sika. We're trusted by healthcare providers, architects, and contractors worldwide to deliver construction solutions that stand up to the critical demands of the healthcare industry.



**ENGINEERED FOR CARE, DESIGNED FOR TRUST** – Safeguarding healthcare facilities for the long term.



### MAINTAINING HYGIENE

In healthcare environments, rigorous hygiene standards are vital to protect patients, staff, and visitors. Cracks, failed joints, or areas of standing water can create hidden risks where bacteria can grow and infections can spread. Sika's seamless, easy-to-clean solutions support hygienic facility design and sustained cleanliness, helping prevent cross-contamination and maintain the highest levels of compliance.



### MINIMISING DOWNTIME

Tight project timelines demand fast, minimally-disruptive solutions. Sika's high-performance, quick-curing systems reduce downtime, maintain compliance and strict hygiene and safety standards, and deliver durability that you can rely on.



### REDUCING MAINTENANCE COSTS

Durable, low-maintenance solutions extend facility life cycles and cut costs. Designed to compensate for high stress areas such as Emergency Rooms, Sika's solutions provide longevity thereby minimising repairs. With Sika Asset Evaluations, we support owners in proactively allocating resources for construction maintenance to optimize long-term performance and savings.

# YOUR CHALLENGES, OUR SOLUTIONS

1

## GENERAL FACILITIES, AND CORE AND SHELL

Entrance lobbies, reception areas, and core and shell spaces require attractive, low-VOC, easy-to-maintain environments with good acoustic performance. Sika meets these needs with durable decorative flooring systems such as Sikafloor® MultiDur and DecoDur. Sika also provides integrated solutions for joint sealing, fire protection, waterproofing, roofing, and energy efficiency, including sealing and bonding systems (Sikaflex®, Sikasil®, SikaSeal®), waterproofing for below-grade and wet areas (Sikaplan®, SikaProof® A+, Sikalastic®, SikaShield®, SikaTop®), roofing systems (Sarnafil®, Sikalastic®, etc), tiling solutions (SikaCeram®), movement joint and impact protection (Wabo, EmSeal), and ETICS façade insulation systems (Sikatherm®, SikaWall®).

2

## PATIENT CARE AREAS

Patient care spaces such as operating theatres, ICUs, wards, treatment and therapy areas, rehabilitation zones, and hyperbaric chambers, require hygienic, seamless, low-VOC, easy-to-clean finishes with optional ESD performance, acoustic comfort, impact protection, and reliable passive fire protection, waterproofing, and joint sealing solutions. Sika supports these needs with seamless flooring systems including ESD options (Sikafloor® MultiDur / DecoDur, Sika ComfortFloor®), hygienic wall coatings (Sikagard®), fire-rated sealing and joint systems (Sikaflex®, Sikasil®, SikaSeal®), waterproofing below tiles (SikaTop®, Sikalastic® LAM), tiling and grouting solutions (SikaCeram®) and architectural joint and impact protection systems (Wabo, EmSeal).

3

## LABORATORIES AND CONTROLLED AREAS

Laboratories and controlled spaces such as radiology, imaging, research, testing, and diagnostic areas, require durable, anti-static, chemically resistant, hygienic, and seamless solutions that are easy to clean and supported by fire protection, waterproofing, and airtight/watertight joint systems. Sika offers high-performance flooring including ESD options (Sikafloor® MultiDur, Sika® Ucrete®), hygienic wall coatings (Sikagard®), fire-rated sealing and joint solutions (Sikaflex®, Sikasil®, SikaSeal®), under-floor waterproofing (SikaTop®, Sikalastic® LAM), tiling systems (SikaCeram®) and movement control joint solutions (Wabo, EmSeal) to reduce contamination risk and simplify maintenance.

4

## INFECTION CONTROL / STERILISATION AND BIO-WASTE MANAGEMENT AREAS

Sterilisation and bio-waste management areas demand highly durable, anti-microbial, chemical-, abrasion-, and high-temperature-resistant floor and wall systems with seamless hygienic finishes, robust waterproofing, reliable joint treatment, and passive fire protection. Sika delivers these requirements with heavy-duty seamless hygienic flooring including ESD options (Sikafloor® MultiDur, Sika® Ucrete®), hygienic wall coatings (Sikagard®), fire-rated joint sealing systems (Sikaflex®, Sikasil®, SikaSeal®), under-finish waterproofing (SikaTop®, Sikalastic® LAM), tiling solutions (SikaCeram®), and floor-to-ceiling joint systems (Wabo, EmSeal) to ensure long-term hygiene and durability under harsh cleaning and thermal conditions.

5

## PHARMACY AND MEDICATION MANAGEMENT AREAS

Pharmacy, medication management, and clinical research areas require chemical resistant, abrasion and stain-resistant, hygienic, easy-to-clean finishes with durable performance and reliable joint sealing to maintain controlled, compliant environments. Sika supports these needs with functional robust seamless flooring systems (Sikafloor® MultiDur, Sika® Ucrete®), watertight joint sealing solutions (Sikaflex®, Sikasil®, SikaSeal®), below-tile waterproofing (SikaTop®, Sikalastic® LAM), and tiling fixing systems (SikaCeram®) to reduce maintenance and ensure long-term compliance.

6

## RESIDENTIAL QUARTERS AND OTHER FACILITIES

Residential, staff, and amenity areas - including accommodation, locker rooms, kitchens, canteens, food storage, toilets, laundries, training spaces, and car parks - require reliable waterproofing from below grade to roof level, durable and easy-to-maintain flooring and effective joint sealing and movement control. Kitchens and food storage areas demand high-temperature, stain and wear resistant, food-grade finishes, while car parks require trafficable, high-wear, waterproof deck systems. Sika addresses these needs with versatile, seamless flooring solutions combining aesthetics and performance (Sikafloor® MultiDur, Sika® Car Park Flooring Systems, Sika® Ucrete®), hygienic wall coatings (Sikagard®), standard joint sealing to fire rated systems (Sikaflex®, Sikasil®, SikaSeal®), tiling and under-tile waterproofing solutions (SikaCeram®, SikaTop®, Sikalastic® LAM), and architectural joint and impact protection systems for interiors and car parks (Wabo, EmSeal) to ensure long-term durability and performance.

7

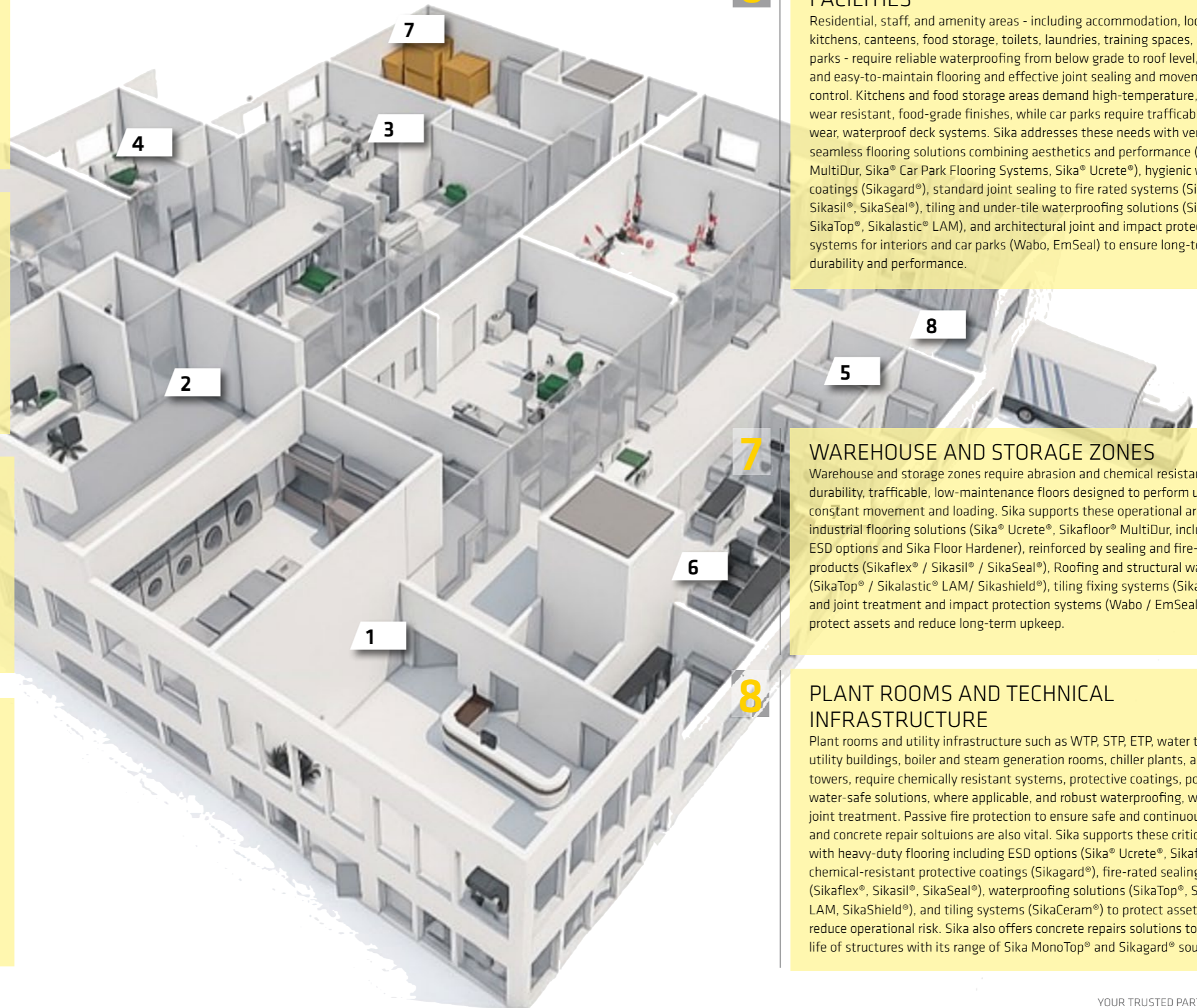
## WAREHOUSE AND STORAGE ZONES

Warehouse and storage zones require abrasion and chemical resistance, high durability, trafficable, low-maintenance floors designed to perform under constant movement and loading. Sika supports these operational areas with industrial flooring solutions (Sika® Ucrete®, Sikafloor® MultiDur, including ESD options and Sika Floor Hardener), reinforced by sealing and fire-resistant products (Sikaflex® / Sikasil® / SikaSeal®), Roofing and structural waterproofing (SikaTop® / Sikalastic® LAM / Sikashield®), tiling fixing systems (SikaCeram®) and joint treatment and impact protection systems (Wabo / EmSeal) to help protect assets and reduce long-term upkeep.

8

## PLANT ROOMS AND TECHNICAL INFRASTRUCTURE

Plant rooms and utility infrastructure such as WTP, STP, ETP, water tanks, HVAC utility buildings, boiler and steam generation rooms, chiller plants, and cooling towers, require chemically resistant systems, protective coatings, potable-water-safe solutions, where applicable, and robust waterproofing, watertight joint treatment. Passive fire protection to ensure safe and continuous operation and concrete repair solutions are also vital. Sika supports these critical areas with heavy-duty flooring including ESD options (Sika® Ucrete®, Sikafloor®), chemical-resistant protective coatings (Sikagard®), fire-rated sealing systems (Sikaflex®, Sikasil®, SikaSeal®), waterproofing solutions (SikaTop®, Sikalastic® LAM, SikaShield®), and tiling systems (SikaCeram®) to protect assets and reduce operational risk. Sika also offers concrete repairs solutions to enhance the life of structures with its range of Sika MonoTop® and Sikagard® solutions.



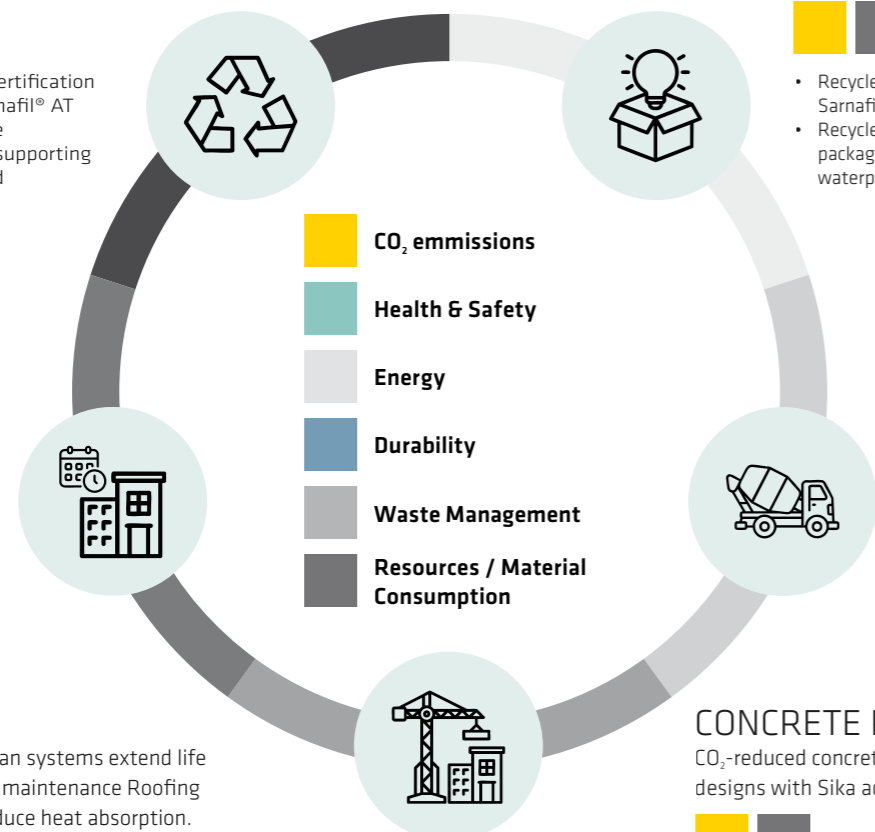
# SUSTAINABLY DURABLE AND EFFICIENT

At Sika, we understand your commitment to sustainability in hospitals and healthcare. Our solutions support sustainability at every stage of your facility's lifecycle, from responsible product selection and efficient application to long-lasting performance and end of life considerations. Whether it is low emission flooring systems that improve air quality or energy efficient roofing that reduces overall energy consumption, we help you achieve your goals by delivering quantified sustainable benefits through reliable and environmentally conscious solutions. We carefully analyze all key sustainability aspects, including resource and material efficiency, waste reduction, durability, energy savings, health and safety, and CO<sub>2</sub> emissions, to help you identify how to optimise your project sustainably at every step.

## END OF LIFE STAGE

Recyclable materials and support for circular construction

- Cradle-to-Cradle certification silver level for Sarnafil® AT roofing membrane
- Superplasticizers supporting the use of recycled aggregates



## PRODUCT STAGE

Low-impact raw materials and efficient production processes

- Recycled content in the Sarnafil® roofing membranes
- Recycled content in the packaging of SikaProof® A+ waterproofing membrane

## USE STAGE

Durable, easy-to-clean systems extend life and require reduced maintenance. Roofing membranes help reduce heat absorption.

- With Sika® Ucrete®, low VOC emissions, reduced downtime and maintenance required and protection of the workforce due to slip resistance
- More durable, less frequent maintenance required for Sikagard®-7000 CR
- Reduced energy demand for cooling due to the use of a Sarnafil® roofing membrane

## CONSTRUCTION STAGE

Fast, low-waste application systems and use of macro synthetic fibers reduce on-site emissions

- Steel reinforcement saved with the use of SikaFiber® Force

## CONCRETE PRODUCTION

CO<sub>2</sub>-reduced concrete optimized mix designs with Sika admixtures.

- CO<sub>2</sub> and water saved with the use of High Range Water Reducer Sika® ViscoCrete® in concrete



The mentioned products are just examples. For actual figures and basis of calculation, please visit the corresponding case study website.

# DRIVING DIGITALISATION

IN HOSPITAL AND HEALTHCARE FACILITY CONSTRUCTION AND MAINTENANCE

Digital transformation is reshaping how hospitals and healthcare facilities are planned, built, and maintained. As the industry faces increasing pressure for efficiency, compliance, and sustainability, Sika supports this evolution with advanced digital solutions tailored to meet these demands.

Sika understands the complexity of decision-making across the project lifecycle and the importance of minimising risk at every stage. Our technologies and experts provide reliable data for your BIM models, enabling smarter collaboration and informed decisions in your virtual design and planning environments.

Through SikaVision®, our comprehensive digital solutions portfolio, we offer a growing range of tools and services that help you monitor, optimize, and predict key aspects of your construction or refurbishment projects. This ensures improved outcomes, reduced downtime, and long-term value.



SikaVision® represents our commitment to the future of construction. By integrating these digital tools and products into your projects, you can:

- **Enhance efficiency:** Streamline your processes, reduce errors, and achieve faster project completions.
- **Make informed decisions:** Our simulators, visualizers, and real-time monitoring systems help you stay ahead with data-driven decisions.
- **Maximise product performance:** Our digital products ensure that you are getting the most out of your Sika product investments.

Discover each of our digital tools and products in detail by exploring their dedicated webpages.



**SikaVision® DIGITAL PRODUCTS & TOOLS**

# SIKA FULL RANGE SOLUTIONS:



LIQUID APPLIED ROOFING



SINGLE PLY ROOFING



BITUMINOUS ROOFING



CONCRETE



CONCRETE REPAIR



STRUCTURAL STRENGTHENING



BUILDING FINISHING



WATERPROOFING



JOINT SEALING



FAÇADES



FLOORING



INDUSTRY



DISTRIBUTION



MODULAR/OFFSITE

## WHO WE ARE

Sika Limited and Sika Ireland Limited are part of the global Sika Group, specialising in the manufacture and supply of chemical based products. Sika has a global leading position in the development and production of systems and products for bonding, sealing, damping, reinforcing, and protection in the building sector and motor vehicle industry. Sika has subsidiaries in 102 countries around the world and, in over 400 factories, produces innovative technologies for customers worldwide. In doing so, it plays a crucial role in enabling the transformation of the construction and vehicle industries toward greater environmental compatibility. In 2025, Sika's 33,700 employees generated annual sales of CHF 11.20 billion (£10.35 bn).

In the UK and Ireland, we provide market-leading solutions for building finishing, concrete, waterproofing, roofing, flooring, refurbishment, sealing & bonding, and industry, and have manufacturing sites in Welwyn Garden City, Preston, Leeds, Wishaw, Redditch, Goole and Dublin with 1000 employees and a turnover of more than £306 million.

The information, and, in particular, the recommendations relating to the application and end use of Sika® products, are given in good faith based on Sika's current knowledge and experience of the products when properly stored, handled and applied under normal conditions. In practice, the differences in materials, substrates and actual site conditions are such that no warranty in respect of merchantability or of fitness for a particular purpose, nor any liability arising out of any legal relationship whatsoever, can be inferred either from this information, or from any written recommendations, or from any other advice offered. The proprietary rights of third parties must be observed. Please refer to our homepage [www.sika.co.uk](http://www.sika.co.uk) for our current standard terms & conditions applicable to all orders. Users should always refer to the most recent issue of the Product Data Sheet for the product concerned, copies of which will be supplied on request.



## SIKA IRELAND LIMITED

Sika House  
Ballymun Industrial Estate  
Dublin 11  
D11 DA2V  
Ireland

## Contact

Phone +353 1 862 0709  
Fax +353 1 862 0707  
E-Mail [info@ie.sika.com](mailto:info@ie.sika.com)  
[www.sika.ie](http://www.sika.ie)  
[X@Sikalreland](https://www.instagram.com/Sikalreland)

**BUILDING TRUST**

