



WATERPROOFING
SikaShield®
MEMBRANES FOR BELOW
GROUND WATERPROOFING

SikaShield®

MEMBRANES FOR BELOW GROUND WATERPROOFING

FEATURES AND BENEFITS

Waterproofing Excellence. Sika has been a leading global waterproofing material and system supplier for more than 100 years.

→ **Access to full technical know-how across different technologies**

Local Presence. Sika's local team is available in the country to support its customers – technical training, specification support, etc.

→ **A strong local partner**

Quality System. As the membrane producer, Sika is in full control of product quality from formulation to sourcing, production and QC.

→ **A consistent, high-quality performance**

In-House Production. Sika's production sites in Italy, Austria, Germany, the Czech Republic and Romania are equipped with state-of-the-art production.

→ **A high level of availability and short lead times guaranteed**

MEMBRANES FOR BELOW GROUND WATERPROOFING



SikaShield® P55 PE RT

- APP membrane,
- 4 mm
- Cold flex: -15°C
- Non-woven polyester reinforced
- For single or double layer systems
- Fully bonded



SikaShield® W172 HDPE

- Adhesive bituminous waterproofing membrane,
- 1.6 mm
- Cold flex: -25°C
- Coated with cross-laminated HDPE film for high puncture resistance
- Used as a single layer under heavy protection
- Fully bonded

ADDITIONAL PRODUCTS

Primers:

- Sika® Igoflex® P-01 (water based)
- Sika® Igoflex® P-10 (solvent based)
- SikaShield® W1 (25kg bag)

Coating:

- Sika® Igoflex®-301 for the foundations, walls or sealing overlaps of the bituminous membranes

Joint sealing:

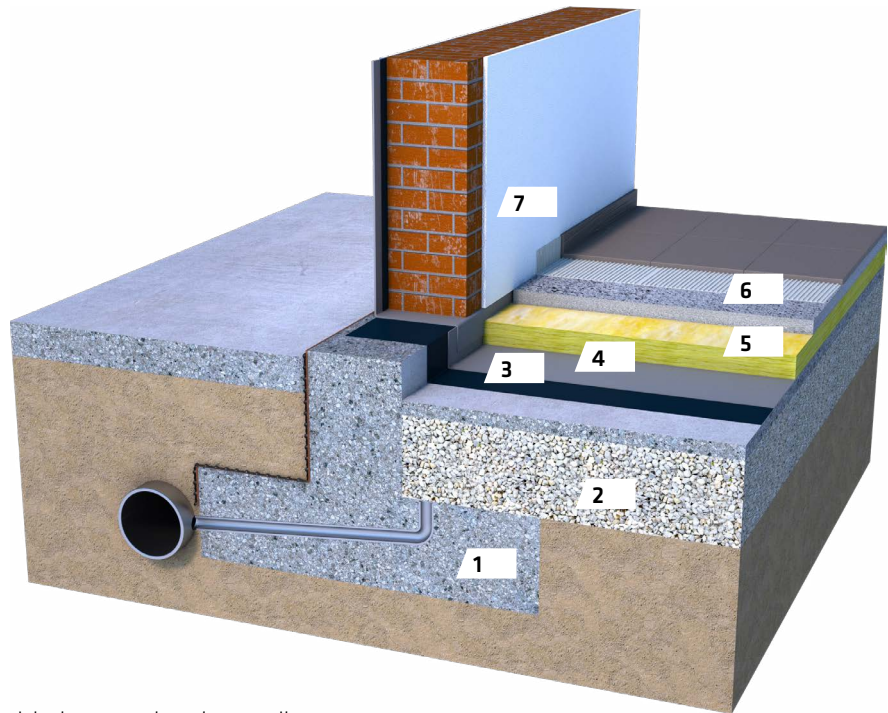
- SikaSwell® A

Mortar:

- SikaTop®-107 to protect the critical areas

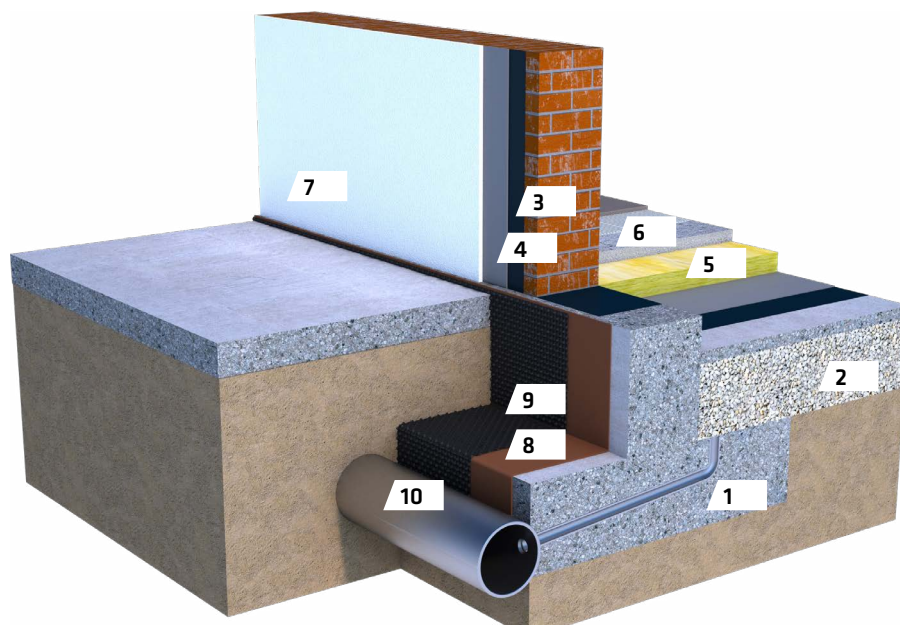
FLOOR IN CONTACT WITH THE GROUND ON DAMP SOILS

1. Horizontal drainage
2. Concrete foundation
3. Sika® Igoflex® P-10 Primer
4. SikaShield® Membrane
5. Thermal insulation
6. Screed + floor covering
7. Wall + covering



View from inside of a floor in contact with the ground on damp soils.

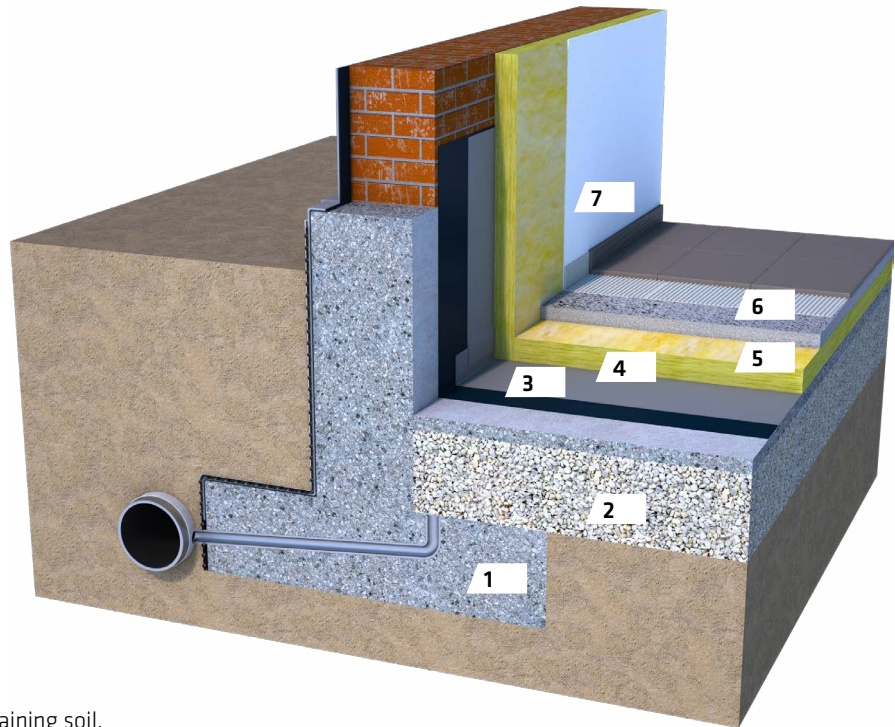
1. Concrete foundation
2. Horizontal drainage
3. Sika® Igoflex® P-10 Primer
4. SikaShield® Membrane
5. Thermal insulation
6. Screed + floor covering
7. Wall + covering
8. Sika® Igoflex® Coating
9. Sika® Drain-850 Geo
10. Drainage pipe



View from outside of a floor in contact with the ground on damp soils.

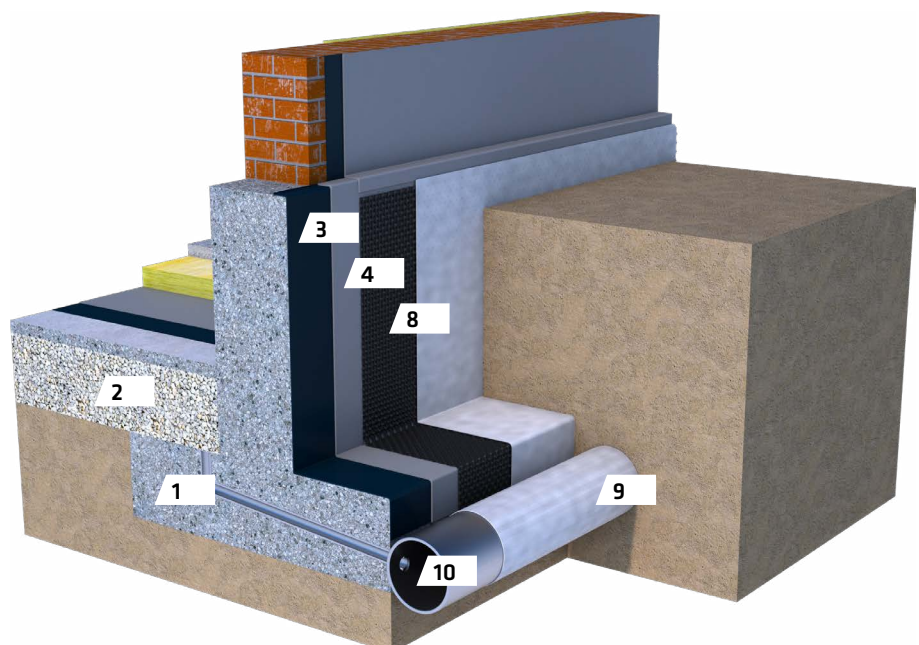
BASEMENT IN DRAINING SOIL

1. Concrete foundation
2. Horizontal drainage
3. Sika® Igolflex® P-10 Primer
4. SikaShield® Membrane
5. Thermal insulation
6. Screed + floor covering
7. Wall + covering



View from inside of a basement in draining soil.

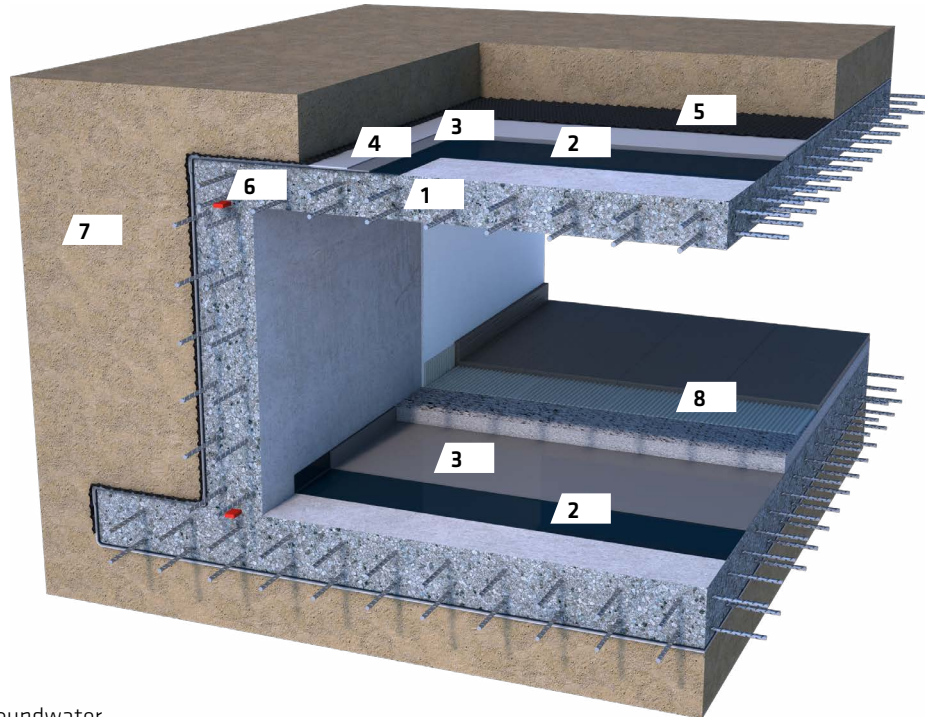
1. Concrete foundation
2. Horizontal drainage
3. Sika® Igolflex® Primer
4. SikaShield® Membrane
5. Sika® Drain-850 Geo
6. Non-woven polypropylene fabric
7. Drainage Pipe



View from outside of a basement in draining soil.

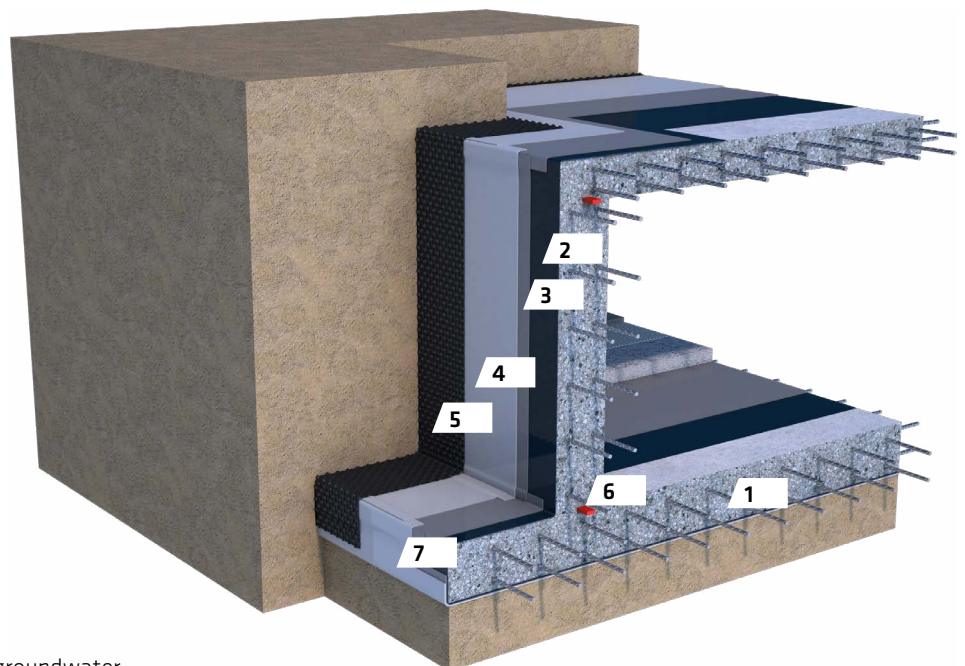
FLOOR IN CONTACT WITH THE GROUND ON DAMP SOILS

1. Concrete foundation
2. Sika® Igoflex® P-10 Primer
3. 1st layer of SikaShield® Membrane
4. 2nd layer of SikaShield® Membrane
5. Protection Board
6. SikaSwell®
7. Soil
8. Screed + floor covering



View from inside of a basement in groundwater.

1. Concrete foundation
2. Sika® Igoflex® P-10 Primer
3. 1st layer of SikaShield® Membrane
4. 2nd layer of SikaShield® Membrane
5. Protection Layer
6. SikaSwell®
7. Pre-applied membrane



View from outside of a basement in groundwater.

SikaShield® W

THE BITUMINOUS MEMBRANE

WET APPLIED

SikaShield® W IS AN INNOVATIVE BITUMINOUS MEMBRANE WHICH IS BONDED TO THE CONCRETE SUBSTRATE WITH A SPECIAL MODIFIED CEMENT-BASED ADHESIVE.

WITH THIS UNIQUE SYSTEM, the most common challenges on waterproofing below ground structures are overcome, providing an effective, easy and simple application for all seasons and job requirements.

SikaShield® W is designed for non-exposed waterproofing applications, such as:

- Foundations
- Basement slabs and walls in contact with the ground
- Balconies
- Podium slabs
- Wet areas

CHARACTERISTICS AND ADVANTAGES

EASY TO APPLY:

Minimum substrate preparation

FAST INSTALLATION:

Can be applied on green concrete

ALL SEASONS:

Application can continue once the rain stops

SAFE TO INSTALL:

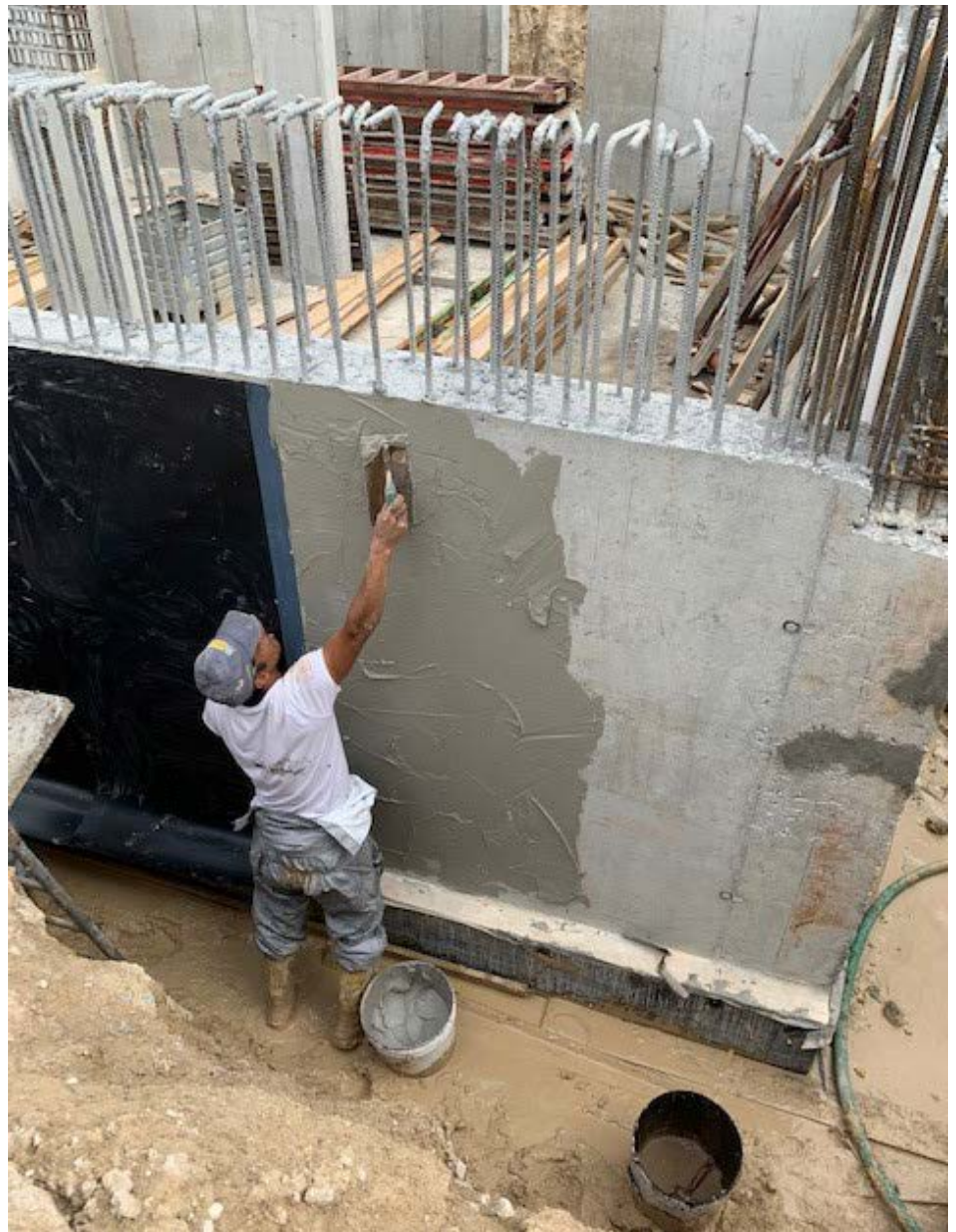
Application in confined spaces and/or walls is simple, easy and effective

FULLY BONDED:

Completely adhered to the substrate

HIGH ADHESION:

Excellent peel adhesion to the concrete surface



The self-priming cement-based adhesive, **SikaShield® W1**, acts as levelling compound and a sealing adhesive resulting in a strong and lasting bond between the concrete substrate and the membrane, avoiding any lateral water migration and reducing the risks of leakages.

APPLICATION STEPS:

<p>1</p>  <p>SURFACE PREPARATION</p> <p>Smoothen sharps and edges and make it wet with a water hose.</p>	<p>2</p>  <p>APPLICATION OF THE ADHESIVE</p> <p>Apply the SikaShield® W1 on the prepared substrate.</p>	<p>3</p>  <p>APPLICATION OF THE MEMBRANE</p> <p>Apply the SikaShield® W membranes over the adhesive while it is still wet.</p>	<p>4</p>  <p>READY FOR THE NEXT STAGE</p> <p>Your basement is ready for the next step.</p>
--	---	---	--

The application of the adhesive SikaShield® W1 is simple as any other mortar. Simply mix with water and apply over the substrate with a trowel or spatula.

The SikaShield® W bituminous membrane is then applied over the adhesive while it is still wet. Immediately after, the membrane sticks to the surface and the adhesion improves day by day, providing the effective fully bonded system.

After this, the waterproofing system is ready for the backfilling and to proceed with the next steps.

SikaShield® W is available in different versions, including thickness, top surfaces and adhesives. Everything to match the requirements of the local countries.



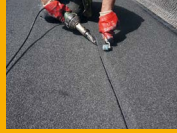
SIKA FULL RANGE SOLUTIONS:



LIQUID APPLIED ROOFING



SINGLE PLY ROOFING



BITUMINOUS ROOFING



CONCRETE



CONCRETE REPAIR



STRUCTURAL STRENGTHENING



BUILDING FINISHING



WATERPROOFING



JOINT SEALING



FAÇADES



FLOORING



INDUSTRY



DISTRIBUTION



MODULAR/OFFSITE

FOR MORE INFORMATION ON SIKA VISIT OUR WEBSITE:



WHO WE ARE

Sika Limited and Sika Ireland Limited are part of the global Sika Group, specialising in the manufacture and supply of chemical based products. Sika has a leading position in the development and production of systems and products for bonding, sealing, damping, reinforcing, and protecting in the building sector and the motor vehicle industry. Sika has subsidiaries in 101 countries around the world and manufactures in over 300 factories. With more than 27,500 employees Sika generates annual sales of CHF 10.49 billion (£9.28 bn). We are also committed to providing quality, service, safety and environmental care.

In the UK and Ireland, we provide market-leading solutions for concrete, waterproofing, roofing, flooring, refurbishment, sealing & bonding, and industry, and have manufacturing sites in Welwyn Garden City, Preston, Leeds, Wishaw and Dublin with around 1000 employees and a turnover of more than £360 million.

The information, and, in particular, the recommendations relating to the application and end use of Sika® products, are given in good faith based on Sika's current knowledge and experience of the products when properly stored, handled and applied under normal conditions. In practice, the differences in materials, substrates and actual site conditions are such that no warranty in respect of merchantability or of fitness for a particular purpose, nor any liability arising out of any legal relationship whatsoever, can be inferred either from this information, or from any written recommendations, or from any other advice offered. The proprietary rights of third parties must be observed. Please refer to our homepage www.sika.ie for our current standard terms & conditions applicable to all orders. Users should always refer to the most recent issue of the Product Data Sheet for the product concerned, copies of which will be supplied on request.



SIKA IRELAND LIMITED

Sika House
Ballymun Industrial Estate
Dublin 11
D11 DA2V
Ireland

Contact

Phone +353 1 862 0709
Fax +353 1 862 0707
E-Mail info@ie.sika.com
www.sika.ie
X @Sikalreland

BUILDING TRUST

