



# REFURBISHMENT SOLUTIONS FOR ROOFS AND WALKWAYS SIKALASTIC® RANGE

# AN INTRODUCTION TO SIKA LIQUID PLASTICS



“A COLD APPLIED LIQUID SOLUTION FOR EVERY JOB,  
NO MATTER THE BUDGET OR COMPLEXITY”

**Quality and innovation are just two of the characteristics replicated throughout Sika Liquid Plastics – visible in our products, manufacturing processes, and research & development.**

Since 1963 we have produced an extensive range of high performance, technologically advanced coatings and membranes for the protection and waterproofing of roofs and balconies. These products are leaders in their fields because of their unique properties and ability to outlast

and outperform traditional counterparts. Also available is a complete range of cold applied built-up roofing systems, including warm roofs, inverted roofs, and green roof finishes.

As a member of the Sika worldwide group, the demand for our products stretches across the globe, and many successful projects have been completed in the Middle East, USA, and Europe.



# POLYURETHANE WATERPROOFING SYSTEMS FOR FLAT ROOFS



**Sika Liquid Plastics has been manufacturing high performance protection and waterproofing systems for over 50 years. The Sikalastic® PU Range of coatings is a single component, cold applied, moisture-triggered, liquid waterproofing membrane, that cures to form a seamless, durable and weather resistant waterproofing solution for exposed roof areas. The range has all the inherent advantages of using liquid membranes, as well as offering the benefit of being a cost effective alternative to other options available in the market.**

Sikalastic® PU incorporates technology that allows the material to use atmospheric moisture to trigger the curing process. This means that the waterproofing membrane is capable of curing in a wide range of conditions, making it ideal for use in the unpredictable UK climate. Unlike traditional polyurethane systems, it does not release CO<sub>2</sub>, which can cause gassing, and application is not delayed by adverse weather, which means roofing works are not slowed down.

Sika Liquid Plastics products are all completely cold applied, so there is no requirement for any heat or naked flame on the roof. This means the risk of fire due to roof works is completely eliminated, and works can be safely carried out whilst the building is occupied. An additional benefit is that insurance premiums for the roofing contractors working on site are reduced, and there is no need for a fire watch at the end of the day. Once installed, the system also achieves high fire ratings when tested in accordance with BS476: Part 3: 2004 and EN1187: 2002: Test 4.

## SYSTEM FEATURES:

- **Cold Applied** - eliminating the risk of fire on an occupied building during installation
- **Seamless** - eliminating the possibility of joint failure through poor workmanship
- **Quick and Easy Application** - using glass fibre matting to allow simple application in detail areas
- **Cost Effective** - especially on complex roofs
- **High Elasticity** - allowing for greater thermal movement
- **Guarantees** - 10, 15 and 20 year guarantees available
- **BBA Accreditation** (Certificate No: 16/5294) **and ETA Accreditation** (and is therefore CE marked)



SIKALASTIC®  
PU ✓

# SIKALASTIC® PU RANGE



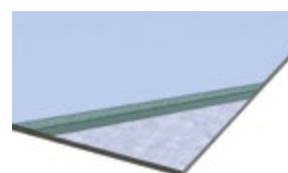
## EASY APPLICATION USING GLASS FIBRE MATTING

**The membrane is applied in two coats: an embedment coat, which is reinforced with Sika Reemat Premium (chopped strand glass fibre mat), and once this is cured, a top coat is added to complete the system.**

The small amounts of solvent present within the polyurethane product 'breaks down' the emulsion binder in the matting, enabling it to become easily moulded around detail areas, allowing quick application, particularly on complex roofs.

The glass fibre mat provides the membrane with exceptional tensile strength to withstand thermal movement in the substrate.

## SIKALASTIC® PU WATERPROOF COATING

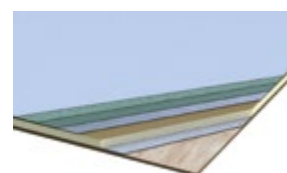


Cures to form a seamless, durable and weather-resistant waterproofing solution for exposed roof areas.

System build up:

- Sikalastic® PU Top Coat
  - Sika Reemat Premium Embedded
  - Sikalastic® PU Embedment Coat
  - Substrate\*
- \*Prime as required

## SIKALASTIC® PU WATERPROOF COATING FOR WARM ROOFS



Cures to form a seamless, durable and weather-resistant waterproofing solution for warm roof areas.

System build up:

- S-Vap Carrier Membrane
  - Primer
  - Decotherm insulation
  - Sika Insulation adhesive
  - S-Vap Vapour Barrier
  - Substrate\*
- \*Prime as required

SIKALASTIC®  
**PU** ✓

# WATERPROOFING FOR METAL ROOFS AND GUTTERS



The lifetime of a plastisol coated steel sheet may be defined as the time it takes to reach the stage where re-coating is necessary to preserve its performance or aesthetics, and can be predicted using manufacturers' projected performance data. The underlying substrate can be seen when the plastisol coating starts to fade, craze and/or delaminate or, on smooth finish coatings, when it starts to blister and spot corrode.

The coating of profiled sheet roofs, in order to extend the waterproofing life of such structures, has long been within the realms of the liquid roof waterproofing industry.

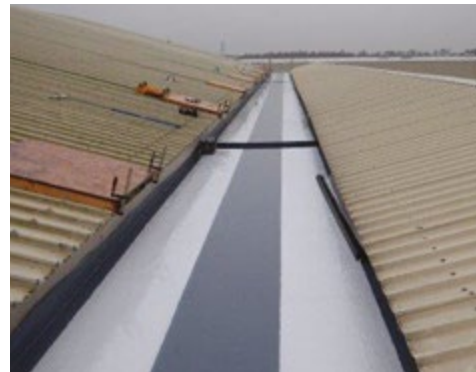
Sikalastic® PU is a seamless coating that provides guaranteed waterproof protection as well as an aesthetically pleasing finish for metal profiled roofs.

## SYSTEM FEATURES:

- **Lightweight Coating** - there is no requirement to overclad the roof, which means disruption to the building below is minimised and costs are kept low
- **Seamless** - the opportunity for windblown rain to penetrate the seams of the cladding is eliminated and the building is kept watertight
- **Extremely Flexible** - the locally reinforced coating can cope with normal thermal movement within the roof, without splitting
- **Easy Application** - systems can be spray or brush applied
- All systems have passed stringent fire tests
- **Guarantees** - 10 and 15 year guarantees available
- **BBA Accreditation** (Certificate No: 16/5294) and **ETA Accreditation** (and is therefore CE marked)



## GUTTERS



SIKALASTIC®  
PU ✓

# WATERPROOFING FOR ASBESTOS AND FIBRE CEMENT SHEETS



**Asbestos was historically used in many types of building products until its use was withdrawn on 24<sup>th</sup> November 1999. Despite this, there are still an estimated 1.5 million non-domestic properties containing asbestos. Asbestosis contributes to around 3,000 deaths per year – this is set to rise to 10,000 deaths per year by 2030.**

There is a clear need to implement safety measures when encountering asbestos in buildings, in order to prevent the release of harmful fibres into the air. Possibly the safest and most cost effective method is coating asbestos. This involves relatively little disturbance of the material, therefore minimising the risk.

There are a number of benefits to coating asbestos rather than attempting to remove it. It eliminates the need to dispose of the removed asbestos, a process which can be costly, and is subject to strict controls; and it can be completed quickly, thus reducing disruption, on-site time, and all of the associated costs.

At Sika Liquid Plastics, we have developed a specialist asbestos coating system known as Asbestolok<sup>®</sup>, which incorporates Sikalastic<sup>®</sup> PU. Once installed, the system enables the asbestos to be left undisturbed, and will provide protection from all of the associated dangers. Our Asbestolok<sup>®</sup> system is suitable for external application, and provides a seamless, elastomeric membrane, which resists cracking and flaking.

## SYSTEM FEATURES:

- **Lightweight Coating** – there is no requirement to overclad the roof, which means disruption to the building below is minimised and costs are kept low
- **No Fixing Required**
- **Cost Effective** alternative to stripping
- **Easy Application** - systems can be spray or brush applied
- All systems have passed stringent fire tests
- **Guarantees** - 10 and 15 year guarantees available
- **BBA Accreditation** (Certificate No: 16/5294) **and ETA Accreditation** (and is therefore CE marked)



SIKALASTIC<sup>®</sup>  
PU ✓

# TRAFFICABLE SYSTEMS FOR WALKWAYS, BALCONIES AND TERRACES



**Most areas that receive frequent foot traffic are constructed from concrete with an asphalt waterproofing membrane, and without any protection, these substrates will inevitably crack and erode.**

We have developed a range of systems specifically designed to protect trafficable surfaces and walkways against the challenges presented by the elements. The systems incorporate our unique waterproofing membrane Sikalastic® PU – a high performance waterproofing system that utilises a moisture-triggered curing system.

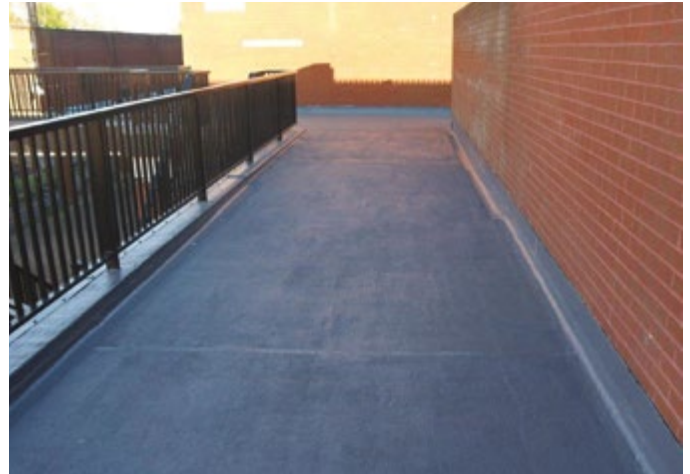
Our trafficable systems can be installed over most existing surfaces, eliminating the costs and inconvenience associated with breaking out and disposing of the old material. Depending upon your design demands, a range of functional top-coat options are available.

## SYSTEM FEATURES:

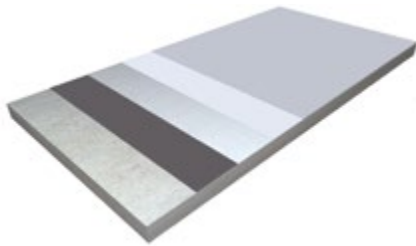
- **Flexible and Crack-Bridging**
- **Elastomeric** – allowing for greater thermal movement
- **Heavy-Duty** – wearing layer option for foot traffic
- **Cold Applied** – eliminating the risk of fire on an occupied building during installation
- **Seamless** – eliminating the possibility of joint failure through poor workmanship
- **Guarantees** – up to 20 year guarantee available
- **CE marked** – tested in accordance with ETAG 005 (ETA cert no 13/0982)

SIKALASTIC®  
PU ✓

# SIKALASTIC® PU RANGE



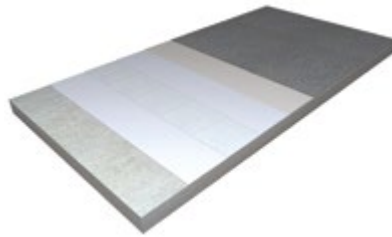
## TRAFFICABLE SYSTEM 10 WATERPROOFING



System build up:

- Sikafloor®-415 and Fine Sand Aggregate
- Sikalastic®-625
- Sika Reemat® Premium
- Sikalastic®-625
- Substrate\*
- \*Prime as required

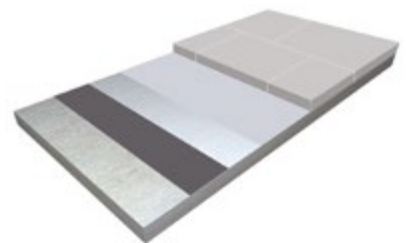
## TRAFFICABLE SYSTEM 15 WATERPROOFING



System build up:

- Sikafloor®-415
- Sikalastic®-625 and Medium Sand Aggregate,
- Sikalastic®-625
- Sika Reemat® Premium
- Sikalastic®-625
- Substrate\*
- \*Prime as required

## TRAFFICABLE SYSTEM 20 WATERPROOFING



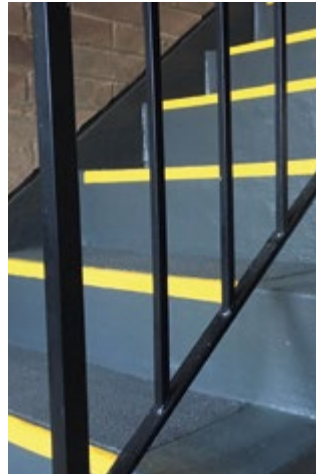
System build up:

- Tiles in adhesive or paving slabs,
- Sikalastic®-625
- Sika Reemat® Premium
- Sikalastic®-625
- Substrate\*
- \*Prime as required

SIKALASTIC®  
**PU** ✓



# RAPID TRAFFICABLE SYSTEMS FOR WALKWAYS, BALCONIES AND TERRACES



The Sikalastic® Rapid range has been developed to be used in situations where the contractor's access to the area may be restricted, and a fast application is desirable. A typical scenario may be a communal walkway or stairwell within a housing block, frequently seen in urban areas, where residents require access to their home within an acceptable time period.

The Sikalastic® Rapid range is based on PMMA (polymethyl methacrylate) technology, which offers the fastest cure of any liquid applied membrane in the market, even in lower temperatures. The product has the ability to cure in 30-40 minutes and can be accelerated if required.

The systems are compatible with almost all substrates, are exceptionally hard wearing, and are proven to withstand the demands of the walkway, balcony and terrace environment, giving reliable waterproofing and protection, in combination with functional surfacing.

Decorative options are available with the use of Sikalastic® Rapid Clear Sealer and coloured quartz.

## WATERPROOFING OF STAIRS AND STAIRWELLS

Sikalastic® Rapid Structured Coating RA is available for areas requiring a more heavy duty finish, such as stairwells and access ramps. When used with a proprietary edge nosing, it provides a long term protective wearing solution.

**SIKALASTIC®**  
**RAPID**

## SIMPLE WET-ON-WET APPLICATION

This means that the polyester reinforcing fleece is first saturated with Sikalastic® Rapid-721 resin, bonding the membrane to the substrate, with the surface layer then applied onto the bonding coat whilst still wet, so forming a single seamless membrane of uniform thickness. The advantage of this type of application is that on smaller roofs, balconies and terraces, a one day application may be possible, because there is no need to wait for drying between coats.

The polyester reinforcing fleece provides the membrane with exceptional tensile strength to withstand thermal movement in the substrate.

### SYSTEM FEATURES:

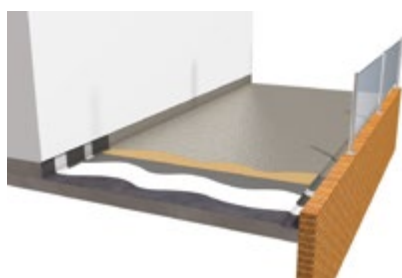
- **Rapid Curing** - allowing areas to be treated quickly, minimising time on site
- **Access Restrictions Minimised** - materials achieve full mechanical properties exceptionally quickly, and can be trafficked shortly after installation
- **Can Be Applied At Very Low Temperatures** - with an ability to still achieve a rapid cure
- **Flexible and Crack-Bridging** - even at extreme sub-zero temperatures
- **Heavy-Duty** - wearing layer option for foot traffic
- **Cold Applied** - eliminating the risk of fire on an occupied building during installation
- **Seamless** - eliminating the possibility of joint failure through poor workmanship
- **Guarantees** - up to 20 year guarantee available
- **BBA Accreditation** (Certificate No: 16/5295)



# SIKALASTIC® RAPID RANGE



## SIKALASTIC® RAPID TRAFFICABLE (WEARING)



System build up:

- Sikalastic® Rapid Pigmented Sealer
  - Sikalastic® Rapid Aggregate
  - Sikalastic® Rapid Levelling Mortar (detail areas)
  - Sikalastic® Rapid-721 Thixo and Sikalastic® Rapid Fleece 110
  - Substrate\*
- \*Prime as required

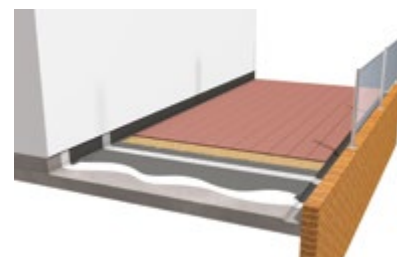
## SIKALASTIC® RAPID TRAFFICABLE (WATERPROOFING & WEARING)



System build up:

- Sikalastic® Rapid Pigmented Sealer
  - Sikalastic® Rapid Aggregate
  - Sikalastic® Rapid Levelling Mortar
  - Sikalastic® Rapid-721 and Sikalastic® Rapid Fleece 110 (detail areas)
  - Sikalastic® Rapid-721 Thixo and Sikalastic® Rapid Fleece 110
  - Substrate\*
- \*Prime as required

## SIKALASTIC® RAPID TRAFFICABLE (WATERPROOFING & BURIED)



System build up:

- Tiles
  - Sikalastic® Rapid Aggregate
  - Sikalastic® Rapid-721
  - Sikalastic® Rapid-721 and Sikalastic® Rapid Fleece 110 (detail areas)
  - Sikalastic® Rapid-721 Thixo and Sikalastic® Rapid Fleece 110
  - Substrate\*
- \*Prime as required



# SIKALASTIC® RAPID WATERPROOFING FOR FLAT ROOFS AND GUTTERS



Sikalastic® Rapid-721 is a polymethyl methacrylate (PMMA), liquid applied roof waterproofing membrane, for use on flat roofs with limited access and gutters, where speed of application is a major advantage. The two component, solvent free, cold applied, liquid resin, cures following an extremely rapid in-situ polymerisation, which is activated by the addition of a peroxide catalyst. This curing proceeds rapidly even at temperatures around 0°C.

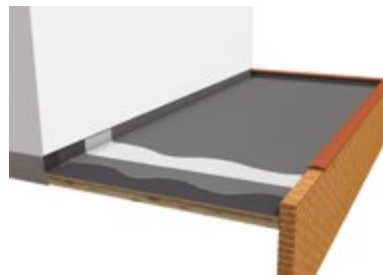
The membrane is reinforced with a polyester fleece and is installed wet-on-wet. This means that the polyester reinforcing fleece is first saturated with Sikalastic® Rapid-721 resin, bonding the membrane to the substrate, with the surface layer then applied onto the bonding coat whilst still wet, so forming a single seamless membrane of uniform thickness. The advantage of this type of application is that on smaller roofs a one day application may be possible, because there is no need to wait for drying between coats.

## SYSTEM FEATURES:

- **Rapid Curing** – allowing areas to be treated quickly, minimising time on site
- **Wet on Wet Application** – membrane and reinforcement applied in one operation, minimising time on site
- **Access Restrictions Minimised** - the materials achieve full mechanical properties exceptionally quickly
- **Cold Applied** – eliminating the risk of fire on an occupied building during installation
- **Seamless** – eliminating the possibility of joint failure through poor workmanship
- **Can Be Applied At Very Low Temperatures** – with an ability to still achieve a rapid cure
- **Flexible** – even at extreme sub-zero temperatures
- **Guarantee** - up to 20 year guarantee available
- **BBA Accreditation** (Certificate No: 16/5295)



## SIKALASTIC® RAPID ROOF WATERPROOFING SYSTEM



System build up:

- Sikalastic® Rapid-721 and Sikalastic® Rapid Fleece 110 (details areas)
  - Sikalastic® Rapid-721 Thixo and Sikalastic® Rapid Fleece 110
  - Substrate\*
- \*Prime as required

SIKALASTIC®  
**RAPID**

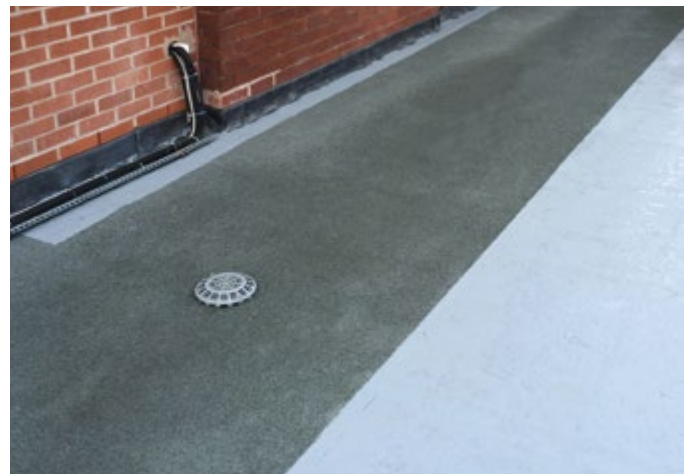
# SIKALASTIC® STP PRODUCT RANGE



**Our pioneering research and development has ensured continual advancements in technology and production of the Sikalastic® STP range, a liquid applied waterproofing membrane for use on flat roofs that has been developed using a new innovative Silane Terminated Polymer (STP) technology. This technology was developed in the sealant market and combines the durability characteristics similar to that of a polyurethane, with the weather resistance of silicones.**

Sikalastic® STP has been developed as a specialist coating to complement our premium low odour range that includes our flagship polyurethane product, Decothane Ultra. Both products in the range emit virtually no odour when compared to many other liquid systems, which makes them ideal for use on the roofs of occupied buildings such as hospitals, food manufacturing plants and schools.

The single pack, solvent free, cold applied liquid membrane is reinforced using a polyester fleece and is installed wet-on-wet. This means that the polyester reinforcement fleece is first saturated with Sikalastic® STP, bonding the membrane to the substrate, with the surface layer then applied onto the bonding coat whilst still wet, so forming a single seamless membrane of uniform thickness. The saturation of the fleece determines the correct application rates, making material consumption easy to monitor and verify. The advantage of this type of application is that on smaller roofs a one day application may be possible, because there is no need to wait for drying between coats.



SIKALASTIC®  
**STP**

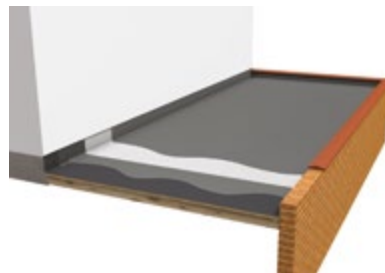
# SPECIALIST ONE DAY SOLUTION FOR SENSITIVE SITES



## SYSTEM FEATURES:

- **Virtually Odourless** - minimises the chance for disruption to the operation of the building due to nuisance odours
- **Solvent free** - zero VOC (Volatile Organic Compounds) reduces impact on the environment
- **Wet-on-Wet Application** - membrane and reinforcement applied in one operation, minimising time on site and reducing labour costs
- **Cold Applied** - eliminating the risk of fire on an occupied building during installation
- **Seamless** - eliminates the possibility of joint failure through poor workmanship
- **Guarantees** - system is backed by our single point guarantee, covering the entire roofing system from the deck upwards, and the workmanship of our Quality Assured Contractors will give you peace of mind
- **Full Service Package** - this includes a consultation and roof survey, design and specification, all with guarantee and site support for every application
- **BBA certification** - coming soon

## SIKALASTIC STP PRODUCT RANGE



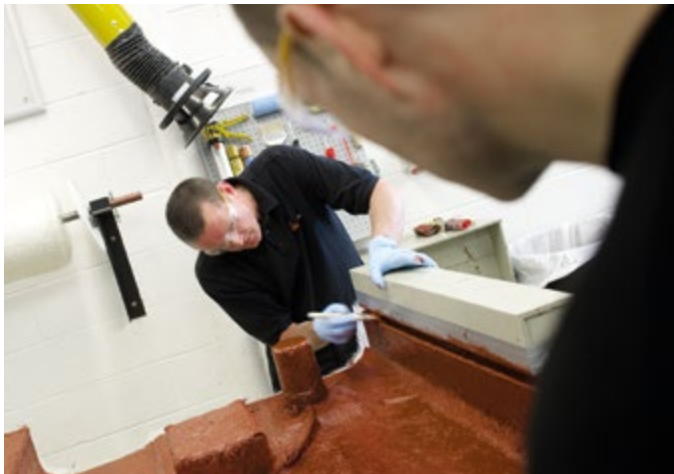
System build up:

- Sikalastic®-650
- Sikalastic® Fleece 120
- Sika Cleaner P

SIKALASTIC®  
**STP**



# TRAINING COURSES FOR ROOFING CONTRACTORS



**Sika Liquid Plastics offers a range of training courses to ensure that contractors who apply our products provide quality workmanship. All courses are conducted by one of the Sika Roofing Applications team in the purpose-built Training Academy at Sika Liquid Plastics' office in Preston.**

## QA CONTRACTOR TRAINING SIKA LIQUID PLASTICS APPLICATOR TRAINING

The training course, designed exclusively for our Quality Assured Contractors, focuses on the correct application and installation techniques for installing Sika Liquid Plastics Roofing Systems.

The two day training course is designed to ensure that the Contractors understand the requirements of working on Sika-Liquid Plastics' roofing systems, combining a mixture of theory, demonstrations, chat, videos and practical application work. All trainees finish with a theory based test, to ensure that the contractors have listened and learnt throughout the two days. Comprehensive information is provided after the course to allow trainees to concentrate on practical elements.

## BASIC COMPETENCY PROGRAMME (BCP)

Sika Liquid Plastics' training course called the 'Basic Competency Programme (BCP)' has been developed as a roofing industry initiative and is led by the Liquid Roofing and Waterproofing Association (LRWA). This is the first time that manufacturers' training has been officially recognised and has been seen to satisfy the requirements of a red, experienced worker Construction Skills Certification Scheme (CSCS) card.

There are currently 600,000 contractors in the UK who are believed to have the wrong CSCS card for the skill level of the job that they do, therefore the BCP is a major initiative to address the problem. This is a quick, easy and cost effective way to get trained and access the correct colour CSCS card. The course is delivered by Sika Liquid Plastics at our Training Academy in Preston.

The programme is aimed at experienced operatives with a minimum of two years' experience on site. Having obtained a BCP Certificate an operative can then apply to upgrade from a green card to a red, experienced worker CSCS card, with immediate effect assuming their standard health and safety accreditation is up to date. The operative should then work towards achieving a blue skilled worker card within three years.

### The course includes:

Two days Sika Liquid Plastics product training and one day BCP content which covers:

- Health & Safety
- Roof Construction
- Design of Flat Roofs
- Contract Planning
- Types of Liquid Applied Systems

## INTRODUCTION TO SIKA LIQUID PLASTICS

The seminar, designed exclusively for our Quality Assured Contractors, is intended to cover the background, administration requirements and our support services, also highlighting technical aspects of working with Sika Liquid Plastics, including wind loading. We will also cover site practices related to our liquid applied roofing products, and offer practical advice, particularly relevant to estimating, design, ordering and site management.

## HOW TO APPLY

<http://ow.ly/VzLU30ckae6>

# GUARANTEES






**GOLD OFFER**  
(Material Guarantee & Final Inspection Certificate)



**SILVER OFFER**  
(Material & Workmanship Guarantee)



**BRONZE OFFER**  
(Material Guarantee)

			
	<b>GOLD OFFER</b> (Material Guarantee & Final Inspection Certificate)	<b>SILVER OFFER</b> (Material & Workmanship Guarantee)	<b>BRONZE OFFER</b> (Material Guarantee)
<b>FLAT ROOFING SYSTEMS</b>			
Sikalastic® PU - 15/20 year	✓	✓	✓
Sikalastic® Rapid Roof Waterproofing	✓	✓	✓
Sikalastic® STP - 20 year	✓	✓	✓
<b>METAL/ASBESTOS ROOFS</b>			
Sikalastic® PU - 10 year	✓	✓	✓
Sikalastic® PU - 15 year	✓	✓	✓
<b>SIKALASTIC® TRAFFICABLE SYSTEMS</b>			
Sikalastic® PU - 10 year	✓	✓	✓
Sikalastic® PU - 15 year	✓	✓	✓
Sikalastic® PU - 20 year	✓	✓	✓
<b>SIKALASTIC® RAPID TRAFFICABLE SYSTEMS</b>			
Wearing System - 10 year	✓	✓	✓
Waterproofing & Wearing System -10/15 year*	✓	✓	✓
Waterproofing & Buried - 20 year	✓	✓	✓
<b>SIKALASTIC® GUTTER SYSTEMS</b>			
Sikalastic® PU (Stand Alone) - 10 year	✓	✓	✓
Sikalastic® PU (Stand Alone) - 15 year	✓	✓	✓
Sikalastic® Rapid -721 - 15 year	✓	✓	✓

\*Dependent on substrate condition

For more information please refer to the Sika Liquid Plastics Guarantees brochure  
Available to download at [www.liquidplastics.co.uk](http://www.liquidplastics.co.uk)

# SIKA FULL RANGE SOLUTIONS FOR CONSTRUCTION:



**LIQUID APPLIED ROOFING**



**SINGLE PLY ROOFING**



**CONCRETE**



**CONCRETE REPAIR**



**STRUCTURAL STRENGTHENING**



**WATERPROOFING**



**JOINT SEALING**



**FAÇADE STRUCTURAL ADHESIVES**



**FLOORING**



**INDUSTRY**



**DISTRIBUTION**



**BUILDING TRUST**



## WHO WE ARE

Sika Limited and Sika Ireland Limited are part of the global Sika Group, specialising in the manufacture and supply of chemical based products. Sika have a leading position in the development and production of systems and products for bonding, sealing, damping, reinforcing, and protecting in the building sector and the motor vehicle industry. Sika has subsidiaries in 101 countries around the world and manufactures in over 200 factories. With more than 20,000 employees Sika generates annual sales of CHF 7.09 billion (£5.45bn). We are also committed to providing quality, service, safety and environmental care.

In the UK and Ireland, we provide market-leading solutions for concrete, waterproofing, roofing, flooring, refurbishment, sealing & bonding, and industry, and have manufacturing sites in Welwyn Garden City, Preston, Leeds and Dublin with more than 870 employees and a turnover of more than £260 million.

The information, and, in particular, the recommendations relating to the application and end use of Sika® products, are given in good faith based on Sika's current knowledge and experience of the products when properly stored, handled and applied under normal conditions. In practice, the differences in materials, substrates and actual site conditions are such that no warranty in respect of merchantability or of fitness for a particular purpose, nor any liability arising out of any legal relationship whatsoever, can be inferred either from this information, or from any written recommendations, or from any other advice offered. The proprietary rights of third parties must be observed. Please refer to our homepage [www.sika.co.uk](http://www.sika.co.uk) for our current standard terms & conditions applicable to all orders. Users should always refer to the most recent issue of the Product Data Sheet for the product concerned, copies of which will be supplied on request.



### SIKA LIMITED

Liquid Plastics  
Sika House  
Miller Street, Preston  
Lancashire, PR1 1EA  
United Kingdom

### Contact

Phone +44 1772 259781  
Fax +44 1772 255672  
E-Mail [liquidplastics@uk.sika.com](mailto:liquidplastics@uk.sika.com)  
[www.liquidplastics.co.uk](http://www.liquidplastics.co.uk)  
@LiquidPlastics

### SIKA IRELAND LIMITED

Sika House  
Ballymun Industrial Estate  
Dublin 11  
D11 DA2V  
Ireland

### Contact

Phone +353 1 862 0709  
Fax +353 1 862 0707  
E-Mail [info@ie.sika.com](mailto:info@ie.sika.com)  
[www.sika.ie](http://www.sika.ie)  
@Sikalreland



Liquid Plastics

