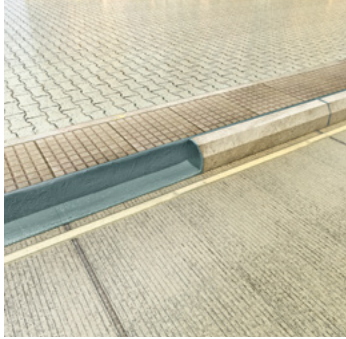


# Sikadur®-31+

Adhesive + Sealant + Filler +  
Repair + Mortar



Crack sealing.



Bonding of stone and concrete.



Bonding of steel.



Patch repair.

## BONDING OF:

- Precast concrete parts
- Concrete and natural stones (i.e. Stair steps)
- Concrete and steel

## REPAIRING OF:

- Structural concrete elements
- Small patches
- Edges

## REPROFILING OF:

- Concrete, masonry or stone surfaces
- Honey combs

## SEALING/FILLING OF:

- Cracks for injections
- Static cracks

# KNOW-HOW FROM SITE TO SHELF



Our most current General Sales Conditions shall apply.  
Please consult the most current local Product Data Sheet prior to any use.

## SIKA IRELAND LIMITED

Sika House  
Ballymun Industrial Estate  
Dublin  
D11 DA2V  
Ireland

## Contact

Phone +353 1 862 0709  
Fax +353 1 862 0707  
E-Mail [info@ie.sika.com](mailto:info@ie.sika.com)  
[www.sika.ie](http://www.sika.ie)  
X @SikaIreland

BUILDING TRUST



# Sikadur®-31+ THE ALL-IN-ONE LOW VOC EPOXY ADHESIVE

Newly formulated epoxy adhesive

- Structural Adhesive
- Sealant
- Filler
- Reprofilling
- Structural Repair Mortar



BUILDING TRUST



# Sikadur®-31+: NEWLY FORMULATED LOW VOC EPOXY ADHESIVE

## MORE PERFORMANCE

- Double CE marking for structural bonding and concrete repair
- Superior adhesion Performance on various Substrates
- Long open time and pot life

## MORE SUSTAINABLE

- Very low VOC Emissions and Low Odor
- Not regulated as a Dangerous Good, Suitable for Professional and DIY
- Meets LEED v4 Requirements

**AT SIKA WE BELIEVE** that performance and sustainability need to walk hand in hand.

Why compromise? Sikadur®-31+ is the result of our unique mindset and development efforts where we can proudly prove that, yes, more performant and more sustainable is possible.

To learn more about the product, please visit our webpage.



## MULTI-PURPOSE

Suitable for almost all substrates

- |                      |                   |                    |
|----------------------|-------------------|--------------------|
| ■ Concrete           | ■ Mortar, Bricks, | ■ Wood             |
| ■ Hard natural stone | ■ Masonry         | ■ Polyester, Epoxy |
| ■ Ceramics           | ■ Steel, Iron,    | ■ Glass            |
| ■ Fibre cement       | ■ Aluminium       |                    |

Suitable for almost all applications

## MULTI-STRONG

- **Superior adhesion performance on various substrates**
- High strength. Stronger than cement-based adhesives
- High initial and ultimate mechanical strength
- High performance over wide temperature range

## MULTI-BENEFICIAL

- **Double CE marking for structural bonding and concrete repair**
- Suitable for dry or mat damp concrete surfaces
- Hardens without shrinkage
- Impermeable to liquids and water vapour
- Good abrasion and chemical resistance
- Available in plastic pails

## MULTI-EASY

- **Longer open time and pot life**
- No primer needed
- Easy to mix and apply
- Non-sag in vertical and overhead applications
- Different colored components to ensure accurate mixing

