

## SYSTEM DATA SHEET

# Sikafloor® DecoDur ES-22 Granite

---

HIGHLY DECORATIVE SMOOTH, LOW VOC, COLOURED GRANITE EFFECT FLOOR COVERING

---

## PRODUCT DESCRIPTION

Sikafloor® DecoDur ES-22 Granite is a highly decorative, coloured, smooth, low VOC floor covering with a granite effect designed for indoor applications.

## USES

Sikafloor® DecoDur ES-22 Granite installation works to be carried out only by Sika Approved Contractors. Please observe information given by Product Data Sheets.

- Particularly used in the life science, pharmaceutical industries and health care industry
- Education (e.g. Schools and Universities)
- Leisure & Culture (e.g. Museums, Stadiums)
- Retail (e.g. Shopping Malls)

## CHARACTERISTICS / ADVANTAGES

- Highly decorative
- Low VOC-content
- Good mechanical and abrasion resistance
- Easy application

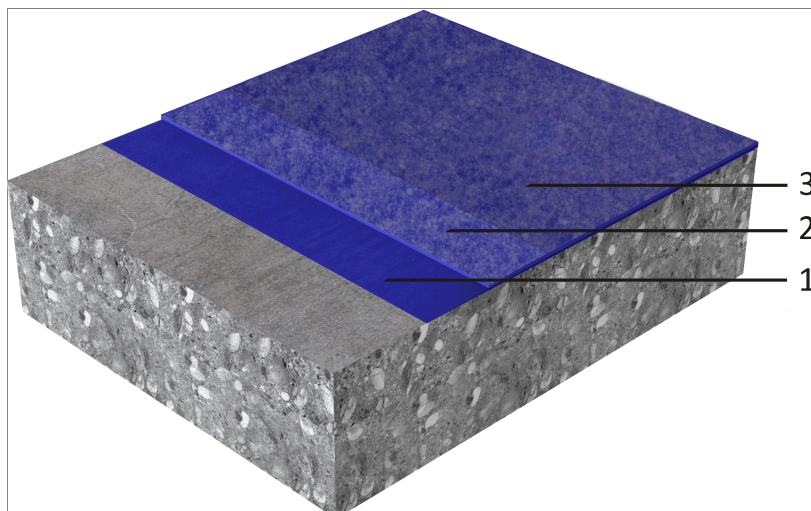
## APPROVALS / STANDARDS

- Particle emission certificate, CSM Statement of Qualification Report GMP A- No. SI 1008-533.
- Biological resistance certificate, CSM Statement of Qualification – ISO 846, very good - Report No. SI 1008-533.
- Eurofins Emission tested according to the AgBBs-scheme. (AgBB – Committee for Health-related Evaluation of Building Products). Sampling, testing and evaluation were performed according to ISO-16000, Report No.G05308C.
- Fire classification in accordance with EN 13501-1, classification report-No. PB-Hoch-170479-2, Hoch Fladungen, Germany, March 2017.
- Slip resistance certificate according to DIN 51130, class R9, Report No.12 6404-S/11, MPI Institute, August 2011, Germany.

# SYSTEM INFORMATION

## System Structure

## Sikafloor® DecoDur ES-22 Granite system



1. Primer	Sikafloor®-264
2. Wearing coat	Sikafloor®-169 + Sika-DecoFiller
3. Top coat	Sikafloor®-304 W

## Composition

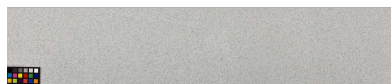
Epoxy

## Appearance

Matt finish

## Colour

Iceberg:



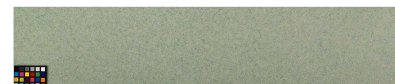
Hiero:



Noblesse:



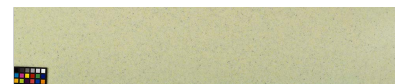
Amande:



Framboise:



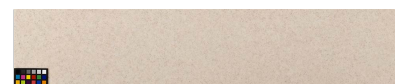
Fleur De Tilleul:



Blue Jean:



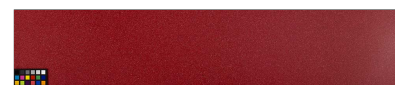
Nougat:



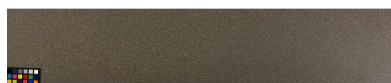
Mer Du Nord:



Bordeaux:



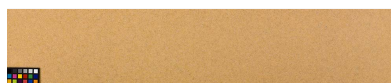
Granit:



Peche:



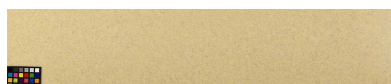
Dune:



Sanguine:



Sable:



Nominal Thickness ~2-3 mm

## TECHNICAL INFORMATION

Compressive Strength	~75 N/mm <sup>2</sup> (7 days / +23°)	(EN-196-1)
Reaction to Fire	Bfl-S1	(DIN EN 13501-1)
Chemical Resistance	Resistant to many chemicals. Contact Sika technical service for specific information.	
Skid / Slip Resistance	R9	(DIN 51130)

## APPLICATION INFORMATION

Consumption	Sikafloor® DecoDur ES-22 Granite system		
	Coating System	Product	Consumption
	Primer	1-2 x Sikafloor®-264	1-2 x ~0.4–0.5 kg/m <sup>2</sup>
	Wearing coat	1 pbw Sikafloor®-169 + 1.5 pbw Sikafloor®-DecoFiller	~3.5–4.5 kg/m <sup>2</sup>
	Top coat	1 x Sikafloor®-304 W (Matt finish)*	~0.15 kg/m <sup>2</sup>
* Before applying Sikafloor®-304 W please refer to the individual product data sheet			
Product Temperature	Please refer to the individual Product Data Sheets		
Ambient Air Temperature	+10 °C min. / +30 °C max.		
Relative Air Humidity	80 % r.h. max.		
Dew Point	Beware of condensation! The substrate and uncured floor must be at least 3 °C above dew point to reduce the risk of condensation or blooming on the floor finish.		
Substrate Temperature	+10 °C min. / +30 °C max.		
Substrate Moisture Content	When performing application work with Sikafloor® DecoDur ES-22 Granite, the substrate moisture content must not exceed 4 % pbw measured by Tramex. Test method: Sika®-Tramex meter, CM measurement or oven-dry-method. No rising moisture according to ASTM (Polyethylene-sheet).		
Waiting Time / Overcoating	Before applying Sikafloor®-169 on Sikafloor®-156/-161/-264/-169 allow:		
	Substrate temperature	Minimum	Maximum
	+10 °C	36 hours	4 days
	+20 °C	12 hours	2 days
	+30 °C	8 hours	1 day
	Before applying Sikafloor®-304 W on Sikafloor®-169 allow:		
	Substrate temperature	Minimum	Maximum
	+10 °C	45 hours	4 days
	+20 °C	36 hours	3 days
	+30 °C	24 hours	2 days
	Times are approximate and will be affected by changing ambient conditions particularly temperature and relative humidity.		
	Applied Product Ready for Use		
	Sikafloor®-169		
	Temperature	Foot traffic	Light traffic
	+10 °C	~ 48 hours	~ 6 days
	+20 °C	~ 30 hours	~ 4 days
	+30 °C	~ 20 hours	~ 3 days
			Full cure
			~ 10 days
			~ 7 days
			~ 5 days

Temperature	Foot traffic	Light traffic	Full cure
+10 °C	~ 30 hours	~ 48 hours	~ 6 days
+20 °C	~ 16 hours	~ 24 hours	~ 4 days
+30 °C	~ 12 hours	~ 18 hours	~ 3 days

## PRODUCT INFORMATION

<b>Packaging</b>	Please refer to the individual Product Data Sheets
<b>Shelf Life</b>	Please refer to the individual Product Data Sheets
<b>Storage Conditions</b>	Please refer to the individual Product Data Sheets

## MAINTENANCE

### CLEANING

Please refer to Sikafloor®- Cleaning Regime

## FURTHER DOCUMENTS

Please refer to :

- Sika® Information Manual Mixing & Applications of Flooring systems
- Sika® Information Manual Evaluation and Preparation of Surfaces for Flooring systems
- Sika® Information Manual Sikafloor® DecoDur ES-22 Granite

## LIMITATIONS

- Do not apply Sikafloor® DecoDur ES-22 Granite on substrates with rising moisture.
- Freshly applied Sikafloor® DecoDur ES-22 Granite must be protected from damp, condensation and water for at least 24 hours.
- The incorrect assessment and treatment of cracks may lead to a reduced service life and reflective cracking.
- For exact colour matching, ensure that all the products in each area are applied from the same control batch numbers.
- Under certain conditions, underfloor heating or high ambient temperatures combined with high point loading, may lead to imprints in the resin.
- If heating is required do not use gas, oil, paraffin or other fossil fuel heaters, these produce large quantities of both CO<sub>2</sub> and H<sub>2</sub>O water vapour, which may adversely affect the finish. For heating use only electric powered warm air blower systems.

## VALUE BASE

All technical data stated in this Data Sheet are based

on laboratory tests. Actual measured data may vary due to circumstances beyond our control.

## LOCAL RESTRICTIONS

Note that as a result of specific local regulations the declared data and recommended uses for this product may vary from country to country. Consult the local Product Data Sheet for the exact product data and uses.

## ECOLOGY, HEALTH AND SAFETY

Local safety regulations must be observed and it advisable to wear PPI when working with this product with particular attention paid to cutting and handling. Transportation Class: The product is not classified as hazardous good for transport. Disposal: The material is recyclable. Disposal must be according to local regulations. Please contact your local Sika sales organisation for more information.

## LEGAL NOTES

The information, and, in particular, the recommendations relating to the application and end-use of Sika products, are given in good faith based on Sika's current knowledge and experience of the products when properly stored, handled and applied under normal conditions in accordance with Sika's recommendations. In practice, the differences in materials, substrates and actual site conditions are such that no warranty in respect of merchantability or of fitness for a particular purpose, nor any liability arising out of any legal relationship whatsoever, can be inferred either from this information, or from any written recommendations, or from any other advice offered. The user of the product must test the product's suitability for the intended application and purpose. Sika re-

serves the right to change the properties of its products. The proprietary rights of third parties must be observed. All orders are accepted subject to our current terms of sale and delivery. Users must always refer to the most recent issue of the local Product Data Sheet for the product concerned, copies of which will be supplied on request.

**SIKA IRELAND LIMITED**

Ballymun Industrial Estate  
Ballymun  
Dublin 11, Ireland  
Tel: +353 1 862 0709  
Web: [www.sika.ie](http://www.sika.ie)  
Twitter: @Sikalreland



**System Data Sheet**  
Sikafloor® DecoDur ES-22 Granite  
November 2019, Version 04.01  
020811900000000007

SikafloorDecoDurES-22Granite-en-IE-(11-2019)-4-1.pdf