

SIKA BENTOSHIELD MAX LM - GROUND LEVEL TERMINATION

25mm

cavity tray (by others)

SIKALASTIC - 1K WATERPROOFING or SIKADUR 32+

150mm

FGL

sand/cement cavity infill

SIKA MONOTOP 4012 (25x25mm fillet)

SIKA WATERTIGHT CONCRETE

50mm

100mm

SIKA BENTOSHIELD MAX LM

SIKA DRAIN-850 GEO (when required)

SIKAPROOF PRIMER-01

SIKAPROOF TAPE-150A (100mm on SIKA BENTOSHIELD MAX LM and 50mm onto concrete poured with SIKAPROOF PRIMER-01)

10mm galvanised steel fixing strip with 5mm holes at 15mm centres (by others) fixed with TRAK-IT C5 NAIL AND WASHER at 300mm centres

SIKA BENTOSHIELD MAX LM - GROUND LEVEL TERMINATION

Drawn by: []

Checked by: []

Approved by: []

Date: []

Description: **SIKA BENTOSHIELD MAX LM - GROUND LEVEL TERMINATION**

Drawing No. BEN02

Issue C

Sheet 1 / 1

ALL DETAIL DRAWINGS ARE FOR UK USE ONLY


DO NOT SCALE FROM DRAWING


THIS DRAWING IS THE CONFIDENTIAL PROPERTY OF SIKALIMITED AND MUST NOT BE REPRODUCED EITHER WHOLLY OR PARTLY. ALL RIGHTS IN RESPECT OF PATENTS, DESIGN AND COPYRIGHTS ARE RESERVED. SIKALTD. WWW.SIKA.CO.UK


Sika

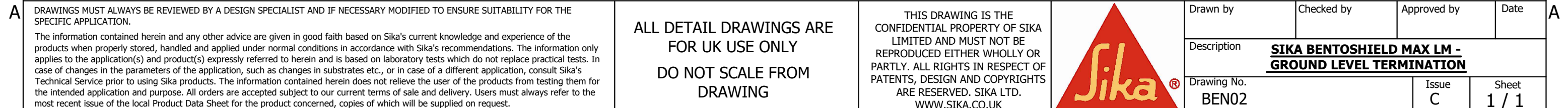
DRAWINGS MUST ALWAYS BE REVIEWED BY A DESIGN SPECIALIST AND IF NECESSARY MODIFIED TO ENSURE SUITABILITY FOR THE SPECIFIC APPLICATION.


The information contained herein and any other advice are given in good faith based on Sika's current knowledge and experience of the products when properly stored, handled and applied under normal conditions in accordance with Sika's recommendations. The information only applies to the application(s) and product(s) expressly referred to herein and is based on laboratory tests which do not replace practical tests. In case of changes in the parameters of the application, such as changes in substrates etc., or in case of a different application, consult Sika's Technical Service prior to using Sika products. The information contained herein does not relieve the user of the products from testing them for the intended application and purpose. All orders are accepted subject to our current terms of sale and delivery. Users must always refer to the most recent issue of the local Product Data Sheet for the product concerned, copies of which will be supplied on request.

A	<p>DRAWINGS MUST ALWAYS BE REVIEWED BY A DESIGN SPECIALIST AND IF NECESSARY MODIFIED TO ENSURE SUITABILITY FOR THE SPECIFIC APPLICATION.</p> <p>The information contained herein and any other advice are given in good faith based on Sika's current knowledge and experience of the products when properly stored, handled and applied under normal conditions in accordance with Sika's recommendations. The information only applies to the application(s) and product(s) expressly referred to herein and is based on laboratory tests which do not replace practical tests. In case of changes in the parameters of the application, such as changes in substrates etc., or in case of a different application, consult Sika's Technical Service prior to using Sika products. The information contained herein does not relieve the user of the products from testing them for the intended application and purpose. All orders are accepted subject to our current terms of sale and delivery. Users must always refer to the most recent issue of the local Product Data Sheet for the product concerned, copies of which will be supplied on request.</p>	<p>ALL DETAIL DRAWINGS ARE FOR UK USE ONLY</p> <p>DO NOT SCALE FROM DRAWING</p>	<p>THIS DRAWING IS THE CONFIDENTIAL PROPERTY OF SIKALIMITED AND MUST NOT BE REPRODUCED EITHER WHOLLY OR PARTLY. ALL RIGHTS IN RESPECT OF PATENTS, DESIGN AND COPYRIGHTS ARE RESERVED. SIKALTD. WWW.SIKA.CO.UK</p>		<p>Drawn by</p>	<p>Checked by</p>	<p>Approved by</p>	<p>Date</p>	A
	<p>Description</p> <p><u>SIKA BENTOSHIELD MAX LM - GROUND LEVEL TERMINATION</u></p>								
	<p>Drawing No.</p> <p>BEN02</p>				<p>Issue</p> <p>C</p>	<p>Sheet</p> <p>1 / 1</p>			

A	<p>DRAWINGS MUST ALWAYS BE REVIEWED BY A DESIGN SPECIALIST AND IF NECESSARY MODIFIED TO ENSURE SUITABILITY FOR THE SPECIFIC APPLICATION.</p> <p>The information contained herein and any other advice are given in good faith based on Sika's current knowledge and experience of the products when properly stored, handled and applied under normal conditions in accordance with Sika's recommendations. The information only applies to the application(s) and product(s) expressly referred to herein and is based on laboratory tests which do not replace practical tests. In case of changes in the parameters of the application, such as changes in substrates etc., or in case of a different application, consult Sika's Technical Service prior to using Sika products. The information contained herein does not relieve the user of the products from testing them for the intended application and purpose. All orders are accepted subject to our current terms of sale and delivery. Users must always refer to the most recent issue of the local Product Data Sheet for the product concerned, copies of which will be supplied on request.</p>	<p>ALL DETAIL DRAWINGS ARE FOR UK USE ONLY</p> <p>DO NOT SCALE FROM DRAWING</p>	<p>THIS DRAWING IS THE CONFIDENTIAL PROPERTY OF SIKALIMITED AND MUST NOT BE REPRODUCED EITHER WHOLLY OR PARTLY. ALL RIGHTS IN RESPECT OF PATENTS, DESIGN AND COPYRIGHTS ARE RESERVED. SIKALTD. WWW.SIKA.CO.UK</p>		<p>Drawn by</p>	<p>Checked by</p>	<p>Approved by</p>	<p>Date</p>	A
	<p>Description</p> <p><u>SIKA BENTOSHIELD MAX LM - GROUND LEVEL TERMINATION</u></p>								
	<p>Drawing No.</p> <p>BEN02</p>				<p>Issue</p> <p>C</p>	<p>Sheet</p> <p>1 / 1</p>			

A	<p>DRAWINGS MUST ALWAYS BE REVIEWED BY A DESIGN SPECIALIST AND IF NECESSARY MODIFIED TO ENSURE SUITABILITY FOR THE SPECIFIC APPLICATION.</p> <p>The information contained herein and any other advice are given in good faith based on Sika's current knowledge and experience of the products when properly stored, handled and applied under normal conditions in accordance with Sika's recommendations. The information only applies to the application(s) and product(s) expressly referred to herein and is based on laboratory tests which do not replace practical tests. In case of changes in the parameters of the application, such as changes in substrates etc., or in case of a different application, consult Sika's Technical Service prior to using Sika products. The information contained herein does not relieve the user of the products from testing them for the intended application and purpose. All orders are accepted subject to our current terms of sale and delivery. Users must always refer to the most recent issue of the local Product Data Sheet for the product concerned, copies of which will be supplied on request.</p>	<p>ALL DETAIL DRAWINGS ARE FOR UK USE ONLY</p> <p>DO NOT SCALE FROM DRAWING</p>	<p>THIS DRAWING IS THE CONFIDENTIAL PROPERTY OF SIKA LIMITED AND MUST NOT BE REPRODUCED EITHER WHOLLY OR PARTLY. ALL RIGHTS IN RESPECT OF PATENTS, DESIGN AND COPYRIGHTS ARE RESERVED. SIKA LTD. WWW.SIKA.CO.UK</p>		<p>Drawn by</p>	<p>Checked by</p>	<p>Approved by</p>	<p>Date</p>	A
	<p>Description</p> <p><u>SIKA BENTOSHIELD MAX LM - GROUND LEVEL TERMINATION</u></p>								
	<p>Drawing No. BEN02</p>				<p>Issue C</p>	<p>Sheet 1 / 1</p>			



<p>A DRAWINGS MUST ALWAYS BE REVIEWED BY A DESIGN SPECIALIST AND IF NECESSARY MODIFIED TO ENSURE SUITABILITY FOR THE SPECIFIC APPLICATION.</p> <p>The information contained herein and any other advice are given in good faith based on Sika's current knowledge and experience of the products when properly stored, handled and applied under normal conditions in accordance with Sika's recommendations. The information only applies to the application(s) and product(s) expressly referred to herein and is based on laboratory tests which do not replace practical tests. In case of changes in the parameters of the application, such as changes in substrates etc., or in case of a different application, consult Sika's Technical Service prior to using Sika products. The information contained herein does not relieve the user of the products from testing them for the intended application and purpose. All orders are accepted subject to our current terms of sale and delivery. Users must always refer to the most recent issue of the local Product Data Sheet for the product concerned, copies of which will be supplied on request.</p>	<p>ALL DETAIL DRAWINGS ARE FOR UK USE ONLY</p> <p>DO NOT SCALE FROM DRAWING</p>	<p>THIS DRAWING IS THE CONFIDENTIAL PROPERTY OF SIKALIMITED AND MUST NOT BE REPRODUCED EITHER WHOLLY OR PARTLY. ALL RIGHTS IN RESPECT OF PATENTS, DESIGN AND COPYRIGHTS ARE RESERVED. SIKALTD. WWW.SIKA.CO.UK</p>		Drawn by	Checked by	Approved by	Date
				Description			
				Drawing No. BEN02	Issue C	Sheet 1 / 1	
<p><u>SIKA BENTOSHIELD MAX LM - GROUND LEVEL TERMINATION</u></p>							